

Summary:

The virtual machines in a Horizon Automated Linked Clone or Full Clone Desktop Pools and Farms by default inherit the network interface card (NIC) and its associated network label from the parent virtual machine or template. This means that once that network is exhausted in terms of IP address space, no more machines can be provisioned, and administrators need to exceed the number of IP addresses in a range for a pool.

Horizon Network Label Assignment Tool helps the administrator to deploy large pools with a single Parent Virtual Machine or template by enabling to set up multiple network labels present on the ESXi host Cluster. It also provides an option to reset and view the network label configuration setting set previously in a tabular format. The Tool provides the below functionality:

The Tool provides an ability to change the Network labels for the following Pools and Farms:

- Linked Clones Automated Desktop pools
- Full Clone Automated Desktop pools
- RDS Farm (Linked Clones)

The Tool provides the Functionality:

- To Set Network Label Settings for Pool/Farm
- Reset existing Network Label Settings for Pool/Farm
- View existing Network Label Settings for Pool/Farm

The screenshot shows the Horizon Network Label Assignment Tool interface. The title bar reads "Horizon Network Label". The main heading is "Horizon Network Label Assignment Tool". The interface includes several input fields and controls:

- Connection Server:** eg. cs.example.com
- Domain Name:** eg. example.com
- Idle Session Timeout:** 10
- Username:** eg. viewadmin
- Password:** (empty field)
- Ignore Certificate:**
- Connect:** (button)

Below the login section, there are radio buttons for "Pool" and "Farm", and a "Pool Name" dropdown menu. The "Network Label Configuration" section includes radio buttons for "Set", "View", and "Reset to Master VM Network", and a "Go" button. The "Port Numbers" field contains "eg. -1 for unlimited or 20,30". At the bottom, there are two large empty rectangular boxes labeled "Network Label Names".

Requirements:

Horizon Network Label Assignment Tool is built on Windows PowerShell and has the below prerequisites:

- Windows 10 x64 or above, Windows Server 2016 or above.
- PowerShell Version 5.1
- VMware PowerCLI Module
- Horizon 7.13.x and Horizon 8 2006 (Linked clone and Full Clone Desktop Pools and RDS Linked Clone Farm)
- Horizon 8 2012 and above (Full Clone automated Desktop Pools)

VMware PowerCLI installation steps:

1. VMware PowerCLI - Install VMware PowerCLI from the PowerShell Gallery if not already installed.
To install VMware PowerCLI, run the following command in the Windows PowerShell prompt:

```
Install-Module -Name VMware.PowerCLI
```

Note: For more information on how to install VMware PowerCLI, see the VMware PowerCLI User's Guide available at <https://code.vmware.com/web/dp/tool/vmware-powercli>.

2. Allow Execution of Local Scripts

```
Set-ExecutionPolicy RemoteSigned
```

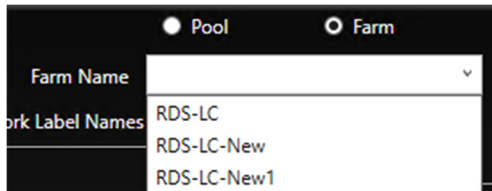
Instructions:

Download and launch the Network Label Assignment tool with elevated privileges on a System which has access to the Connection Server and has VMware PowerCLI installed.

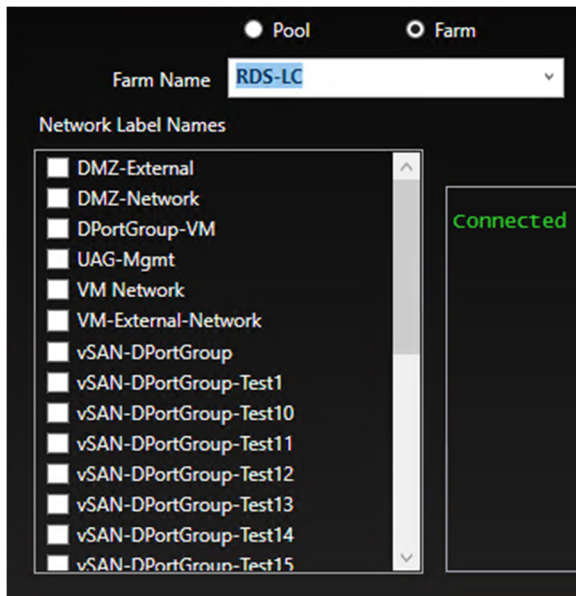
1. **Connection Server Textbox:** type the Connection Server Fully qualified domain name like cs.example.com
2. **Domain Name Textbox:** type the domain name like example.com
3. **Username Textbox:** Type the Horizon Admin username
4. **Password Textbox:** provide the Horizon Admin password
5. **Idle Session Timeout:** Idle Session Timeout value should be between 10 and 99 minutes. Default is 10 minutes.
6. **Ignore Certificate checkbox:** Disable self-signed or invalid Certificate check for Horizon Connection Server.
7. **Connect Button:** Click the Connect button to connect to the specified Connection Server.

Once it is connected to Horizon Connection server instance, select either a Pool or a Farm Radio button and then select the appropriate Pool or Farm from the dropdown box.

8. **Pool Radio button:** once the Pool radio button is highlighted, the below Pool Name Dropdown list box will populate the Linked Clone and Full Clone Automated Desktop pools configured in the Connection Server.
9. **Farm Radio button:** once the Farm radio button is highlighted, the below Farm Name Dropdown list box will populate the RDS Linked Clone Farms configured in the Connection Server.



10. **Pool Name / Farm Name Dropdown list box:** The Dropdown list box will be displayed based on the Pool and Farm Radio button selection. It will only populate Linked Clone and Full Clone Automatic Desktop Pools if the Pool Radio button is highlighted. Likewise, if Farm Radio button is highlighted, the dropdown will only populate the RDS Linked Clone farm.
11. **Network Label Names Box:** After selecting the Pool or the Farm name from the Dropdown list box, all the Network Label or Portgroups in the ESXi Cluster will be listed with a checkbox in the Network Label Names Box. The Portgroups or Network Labels can be selected by enabling the checkboxes.



12. **Set Radio Button:** This will help in setting the Network Label Configuration for the Pool or Farm.
13. **View Radio Button:** This will show the previously set network Labels configuration for the Pool or Farm.
14. **Reset to Master VM Network Button:** This will remove the previously set Network Label Settings for the Pool or Farm and set the network label settings back to the Master VM or Template network label settings.
15. **Port Numbers Textbox:** Enter the number of ports or maximum labels to be used for each Network label Names.
The Port number values should be separated by commas and must be entered in the same order as the Network Label Names that were enabled in Step# 9. For Example:

Scenario 1:

Specify separate Port number for each Network Label Names. If the Network Label Names selected are:

DPortGroup-VDI1
DPortGroup-VDI2
DPortGroup-VDI3

Then the Port number should be entered in the same order as the Network Label Names enabled. The Port Numbers should be: 10,20,30. The Output would be:

DPortGroup-VDI1	LIMITED	10
DPortGroup-VDI2	LIMITED	20
DPortGroup-VDI3	LIMITED	30

Scenario 2:

Consider the same Network Label Names as in Scenario 1, a single value for Port Number can be specified for all 3 Network Label Names like 50

Scenario 3:

For unlimited Ports for the Network Label Names, -1 can be specified.

16. **Go Button:** After selecting all the fields, click on the GO button to execute. Please note the Tool will not generate any event entries in the Horizon View Event Database for Setting or resetting the Network labels on the Pools or Farm
17. **Output Box:** All the Output of the commands will be displayed in the Output box.