

VMware Desktop Watermark Guide

VMware End User Computing 2017 November

Contents

1	Prerequisite.....	1
2	Installation & Setups.....	1
2.1	Installation.....	1
2.2	Start & Stop.....	6
2.3	Uninstall.....	8
3	Watermark Customization.....	9
3.1	Setting Watermark Styles.....	9
3.1.1	Change text displayed on screen.....	9
3.1.2	Change margin of watermark.....	11
3.1.3	Change Line spacing.....	11
3.1.4	Change text rotation.....	11
3.1.5	Change opacity.....	11
3.1.6	Invisible Watermark.....	11
3.1.7	Change screen location.....	11
3.1.8	Change the image and text location.....	11
3.1.9	Reset to default.....	12
3.2	Using Invisible Watermarks.....	12
4	Appendix.....	13

1 Prerequisite

1. Desktop Watermark installer: [FlingDesktopWatermark-1106.msi](#)
2. [.Net Framework 4.5](#)
3. VMware Horizon

2 Installation & Setups

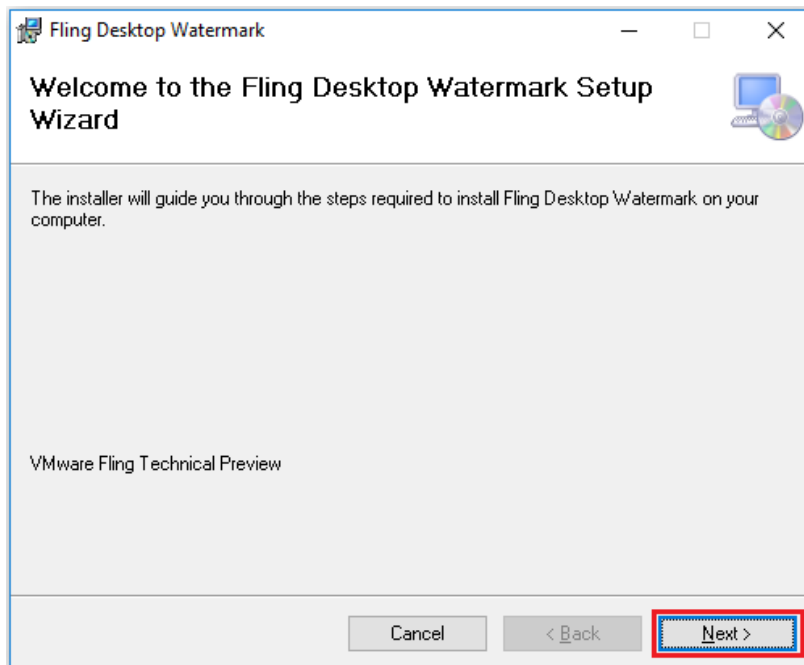
2.1 Installation

Step 1: Prepare a Windows desktop and install Horizon agent in this desktop. You can follow the guide below for this step: <https://docs.vmware.com/en/VMware-Horizon-7/7.2/com.vmware.horizon.virtual.desktops.doc/GUID-1F2D0C6E-6379-4B52-A7EA-C1EF09CE2F9B.html>

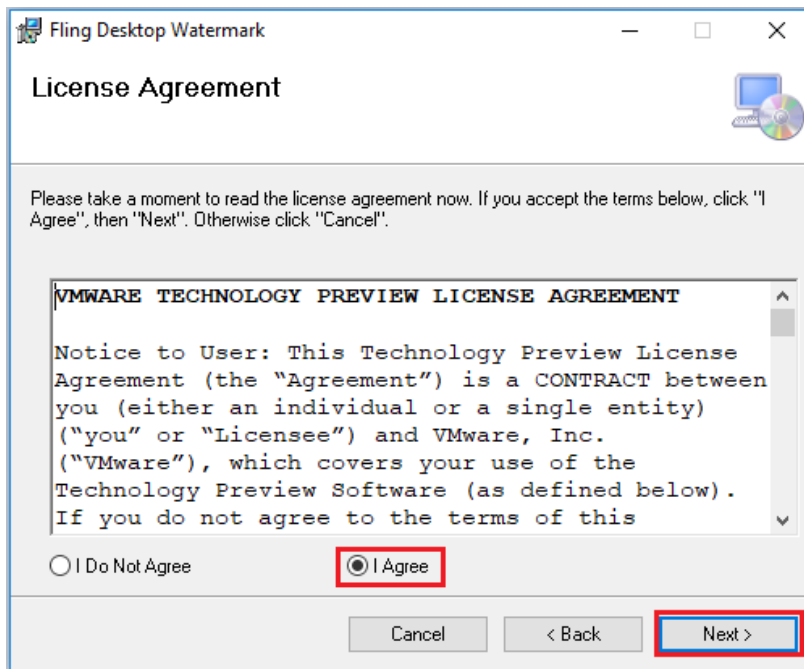
Step 2: Download installation file “**FlingDesktopWatermark-1106.msi**” from VMware Fling site to your desktop.

Step3: Double click installation file to begin installation. Click “**Next**”.

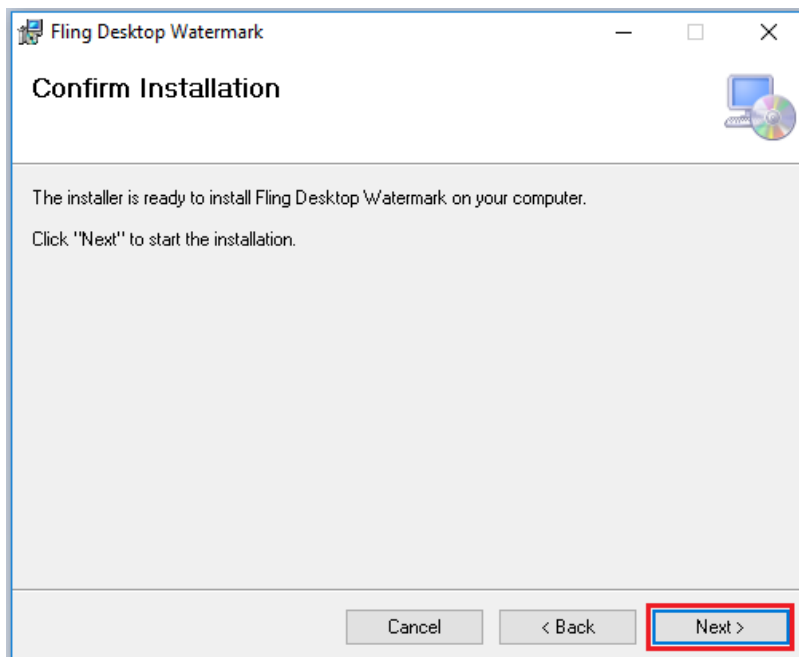
Note: you must install as an administrator.

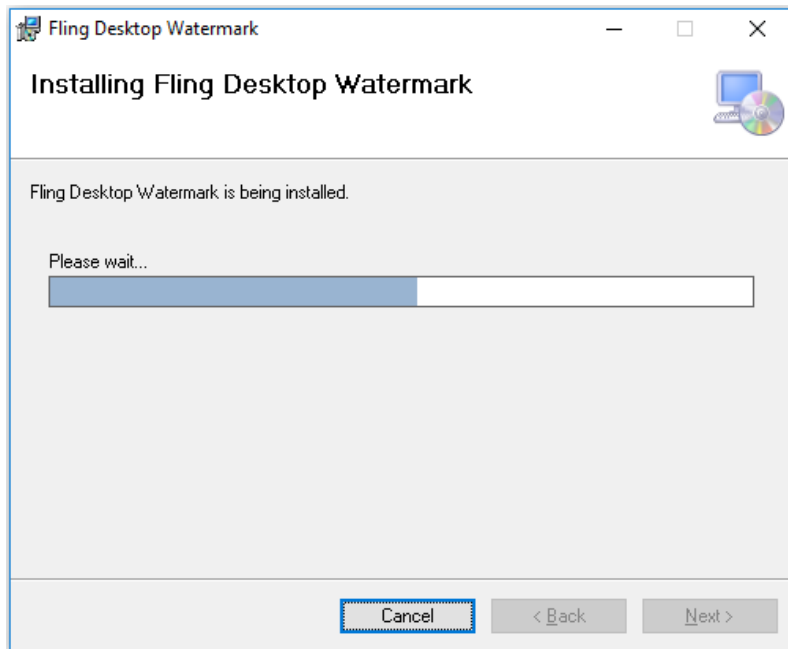


Step 4: Select "Agree" for the license agreement then click "Next".



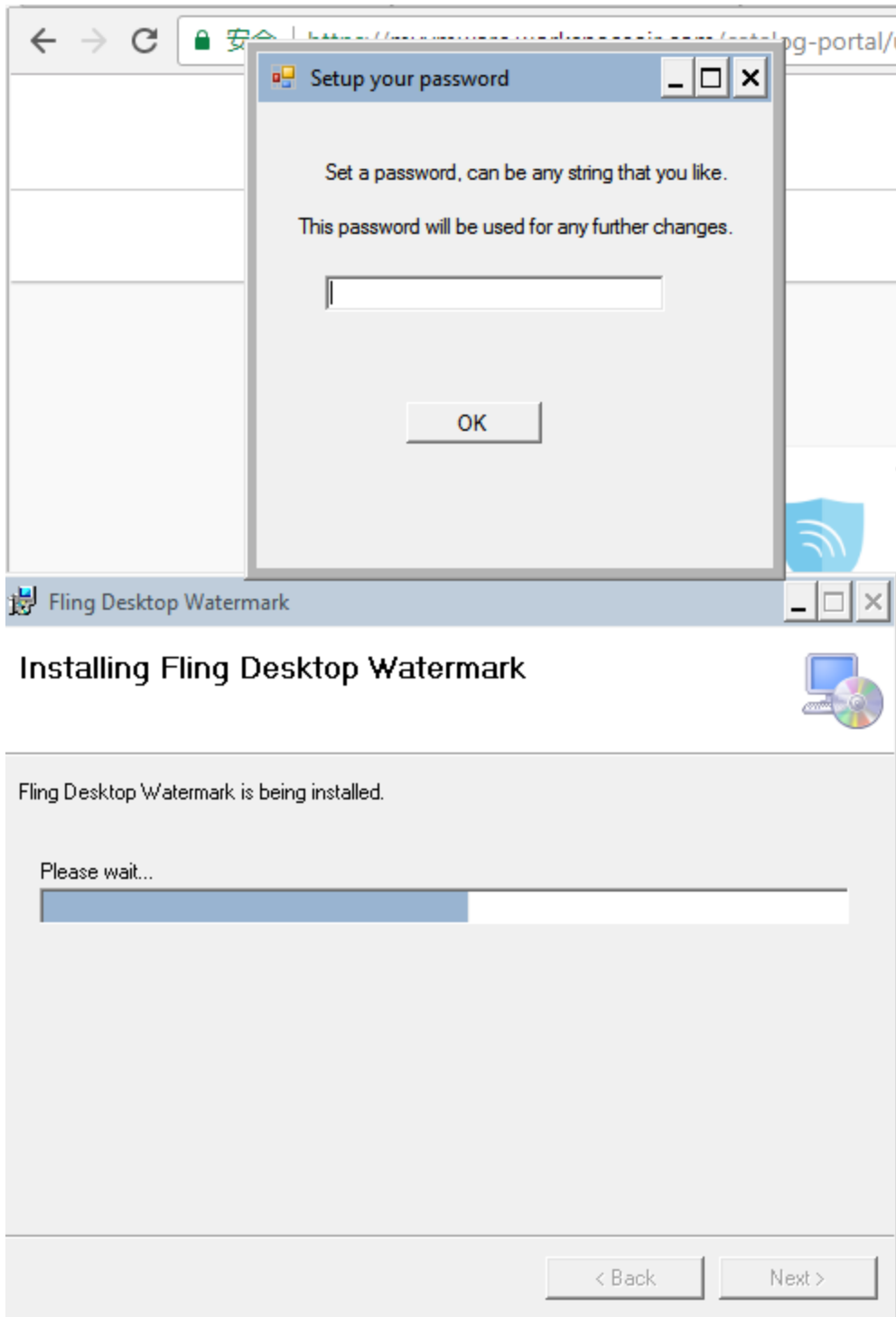
Step 5: Click "Next" to confirm and start installation.



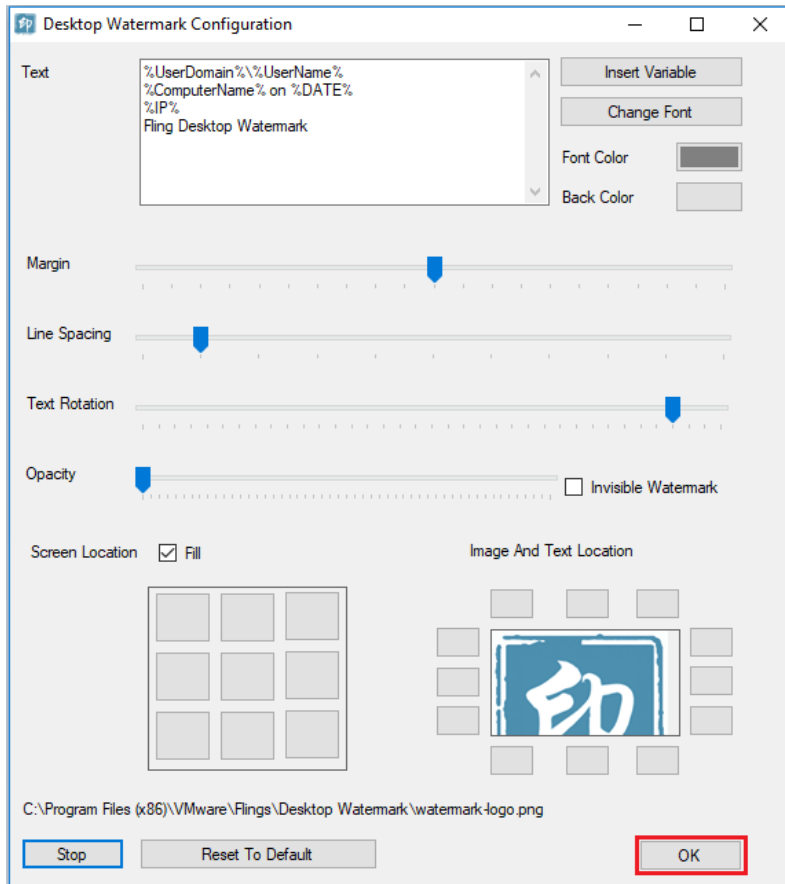


Step 6: Set up a password. You can use any password that you like.

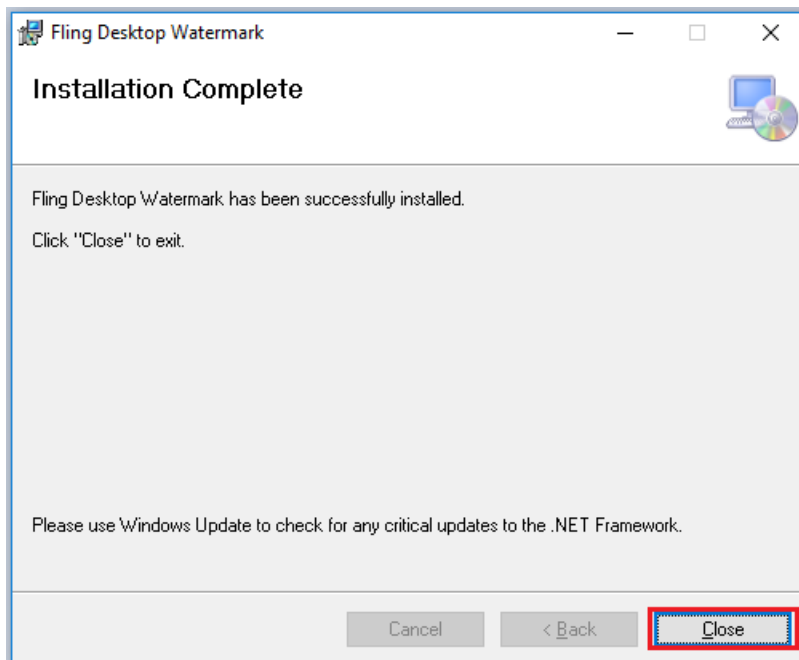
Note: you must remember this password and use the same password for configuration and uninstallation.



Step 7: Click "OK" to accept the default settings or you can edit the setting now. Customized settings can be configured later.



Step 8: Click "Close" to finish installation.



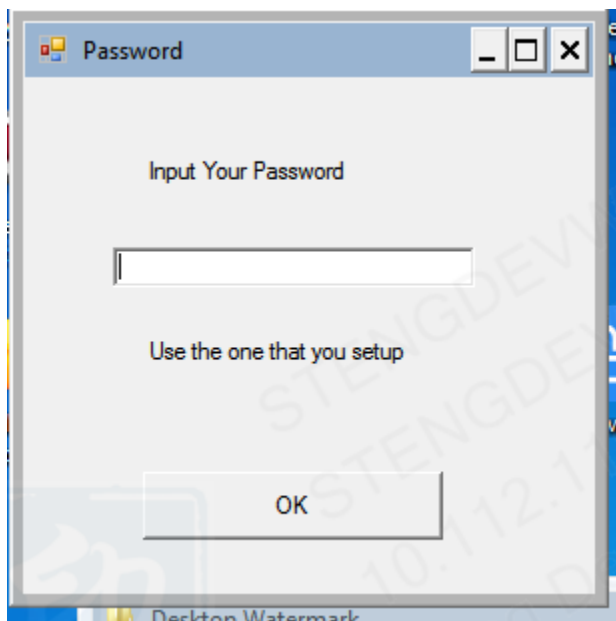
Important: From this point, user can customize the Watermark following [Chapter 3 Watermark Customization](#). Customization is a **must** before the next step.

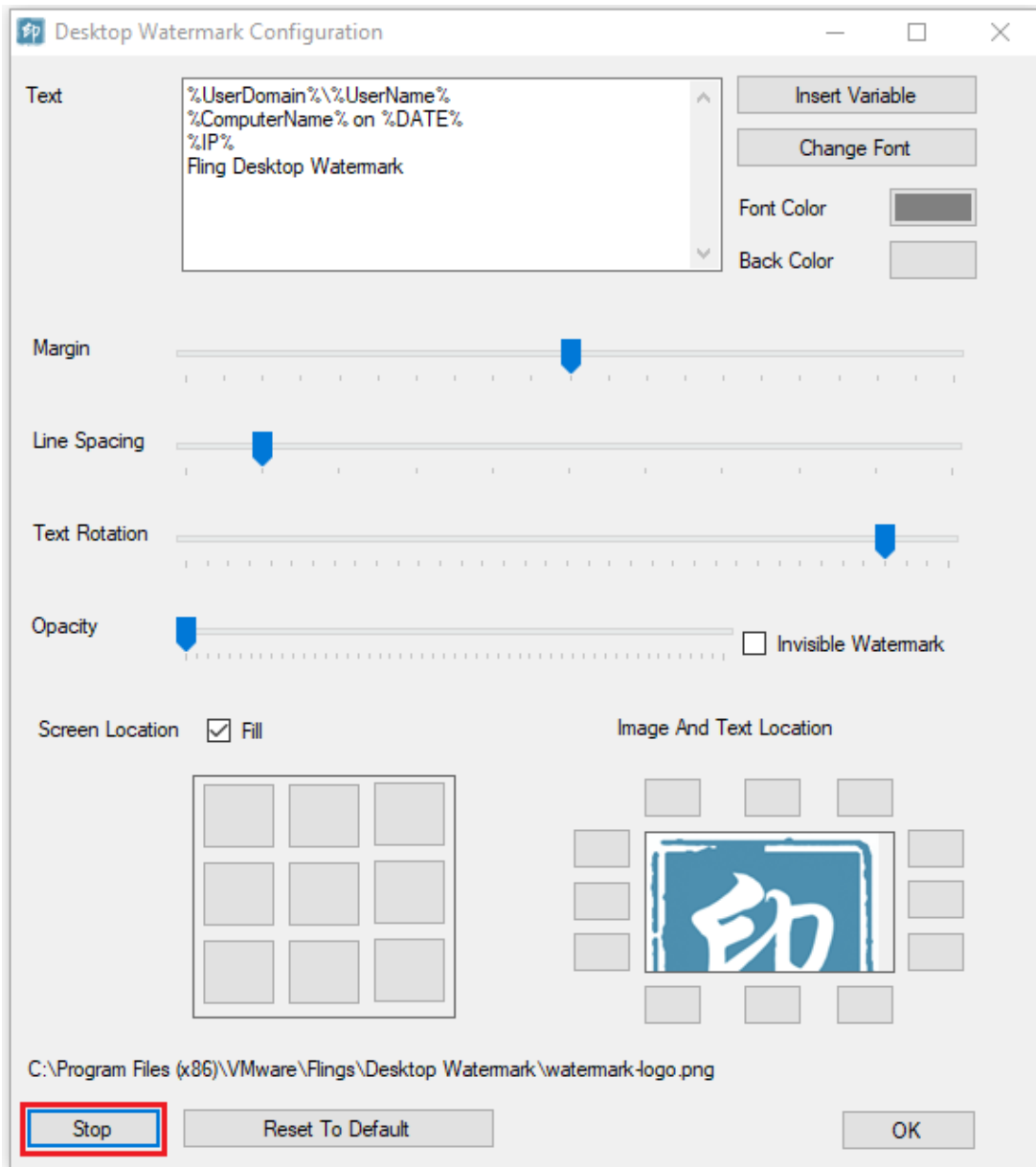
Step 8: Provision your desktop pool in Horizon based on this VM.

2.2 Start & Stop

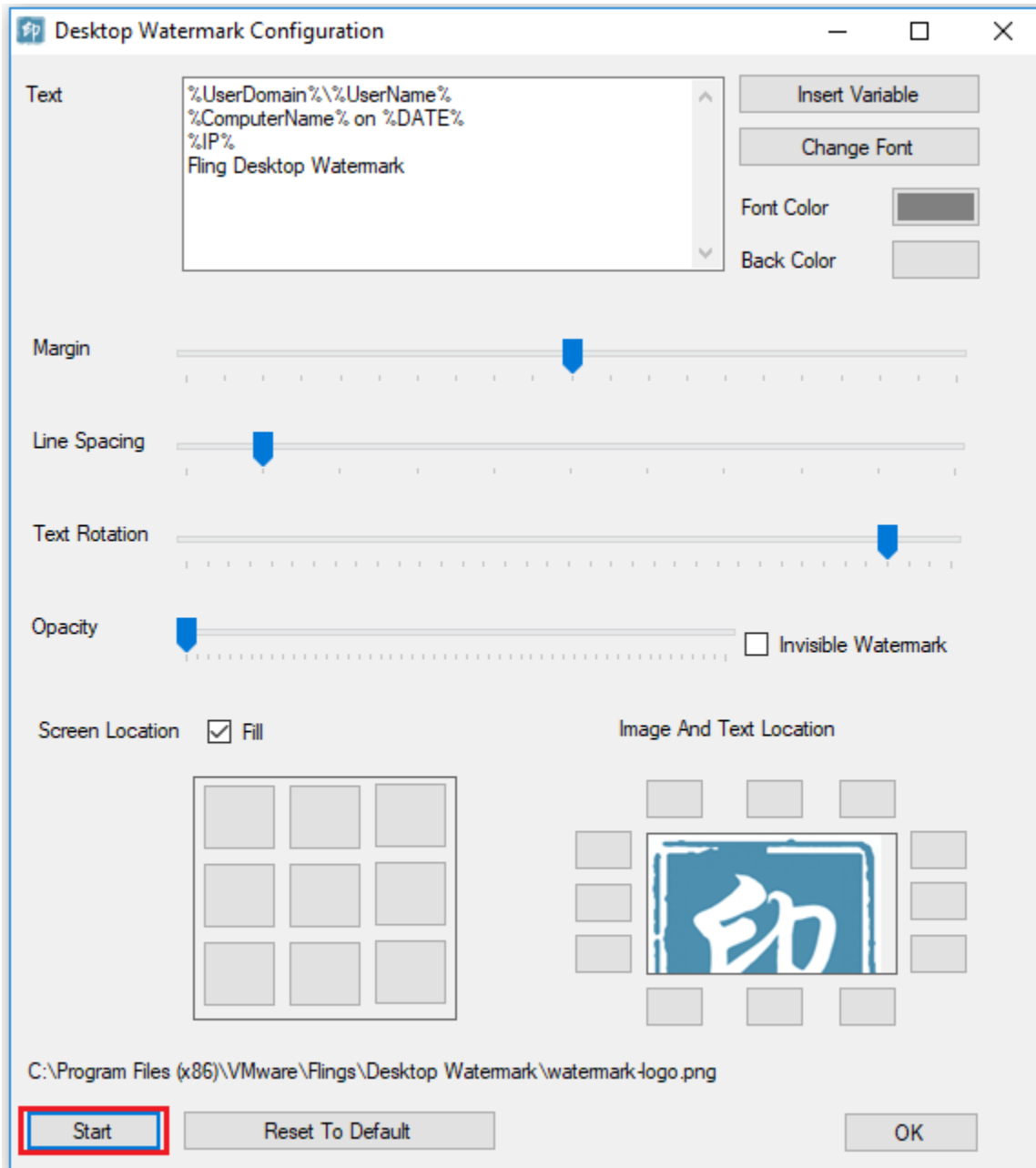
Desktop Watermark starts automatically. If you want to stop Digital Watermark, open Digital Watermark configure panel at “**C:\Program Files (x86)\VMware\Flings\Desktop Watermark\WatermarkConfig.exe**”, input the password that you set during the installation process, and then click “**Stop**” on the bottom left.

If you forgot the password, you could not stop the watermark.





If you want to start Digital Watermark, open Digital Watermark configure panel at “**C:\Program Files (x86)\VMware\Flings\Desktop Watermark\WatermarkConfig.exe**”. It will start once you double clicked the exe file. Or by clicking “**Start**” on the bottom left. This button is only available when Desktop Watermark is stopped.



2.3 Uninstall

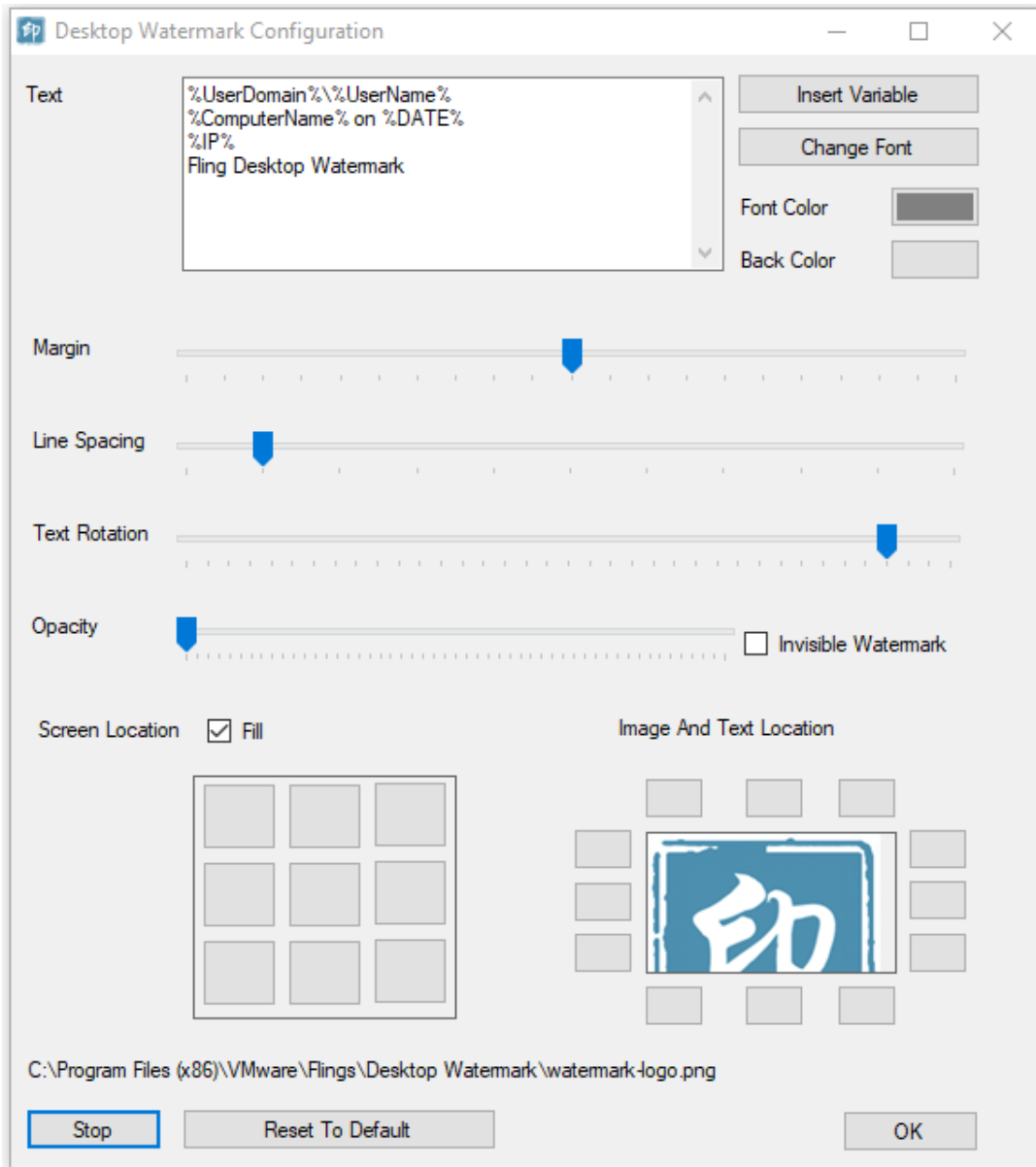
Before you uninstall Desktop Watermark, you must stop the watermark first. Refer to previous 2.2 to stop the watermark. Otherwise, you may meet an error during the uninstallation.

Open Windows Control Panel and you can uninstall Desktop Watermark by Windows standard uninstall process.

3 Watermark Customization

3.1 Setting Watermark Styles

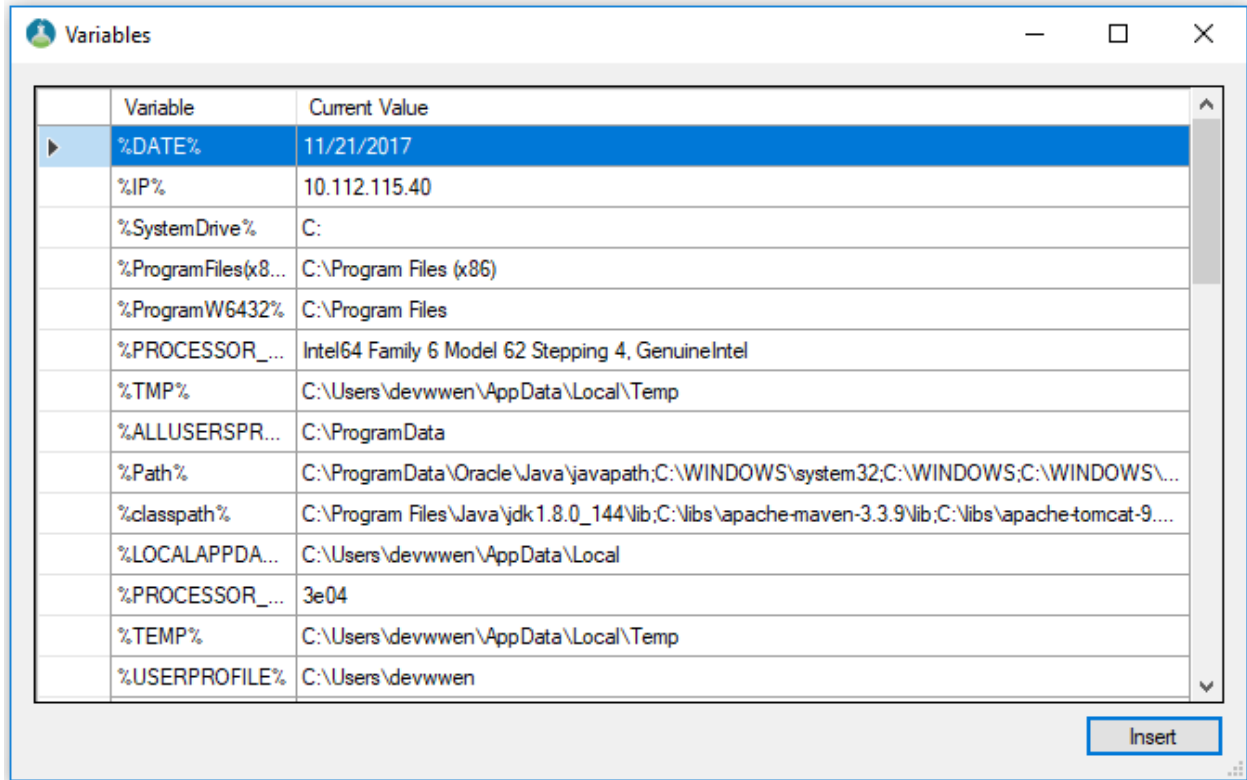
Open Desktop Watermark configuration by double click “C:\Program Files (x86)\VMware\Flings\Desktop Watermark\WatermarkConfig.exe”



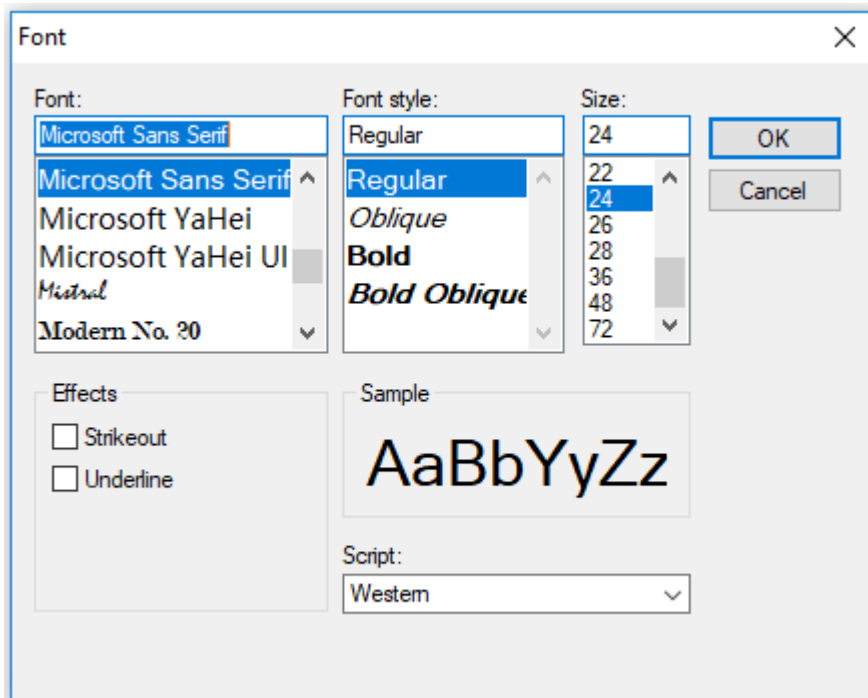
3.1.1 Change text displayed on screen

Change the content in text area after “Text” label. This is what will be displayed as watermark on screen. Variables will be translated into real time value when displayed.

Insert variable into text using “Insert Variable”. Only defined variables can be used

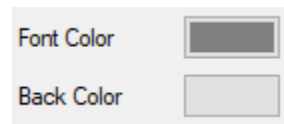


Displayed content's font can be changed by clicking "Change Font" button



“**Font Color**” is used to change the text font color.

“**Back Color**” is used to change the text background color.



3.1.2 Change margin of watermark

“**Margin**” controls the white space your watermark is to the left top of the screen.

3.1.3 Change Line spacing

“**Line Spacing**” is the line space of your watermark text.

3.1.4 Change text rotation

“**Text Rotation**” is how much you want to rotate the watermark text.

3.1.5 Change opacity

“**Opacity**” is how well you can see the watermark. You will be more likely to see watermark clearly if opacity is higher.

3.1.6 Invisible Watermark

“**Invisible Watermark**” will turn the watermark invisible which will only be available on Reveal.

3.1.7 Change screen location

“**Screen Location**” will set the location of the watermark. Watermark will repeat on screen if “**Fill**” checkbox is checked. Screen has been divided into 9 parts by “Screen Location” and you can choose which location you want the watermark to display on your screen by selecting the squares below.

3.1.8 Change the image and text location

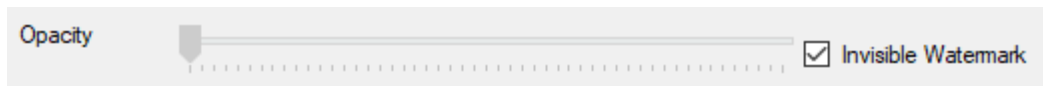
Click the image icon below “**Image And Text Location**” will guide you update a new customized image as watermark image. You can change the image and text location to each other by clicking the location buttons around the image.

3.1.9 Reset to default

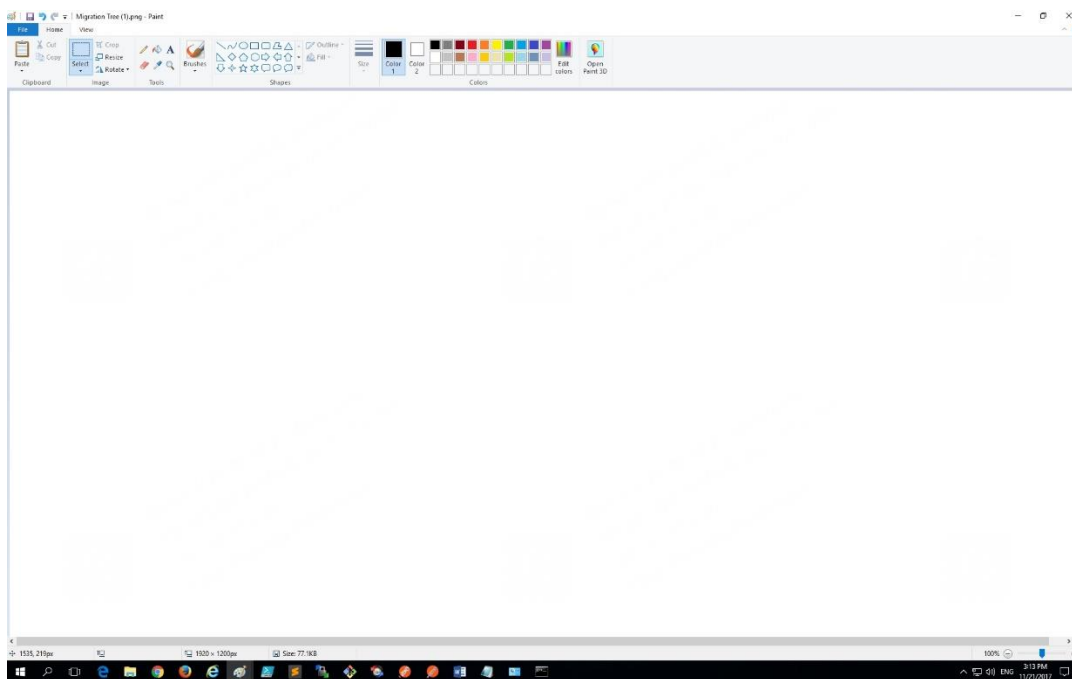
Clicking “Reset To Default” will reset all settings above to default settings”

3.2 Using Invisible Watermarks

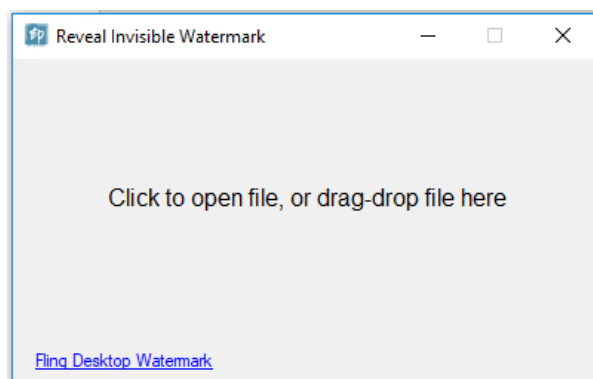
If “**Invisible Watermark**” is selected, watermark cannot be seen on screen, when a screenshot has been captured, using “Reveal.exe” can show the invisible watermark.



1. Take a screenshot and save it:

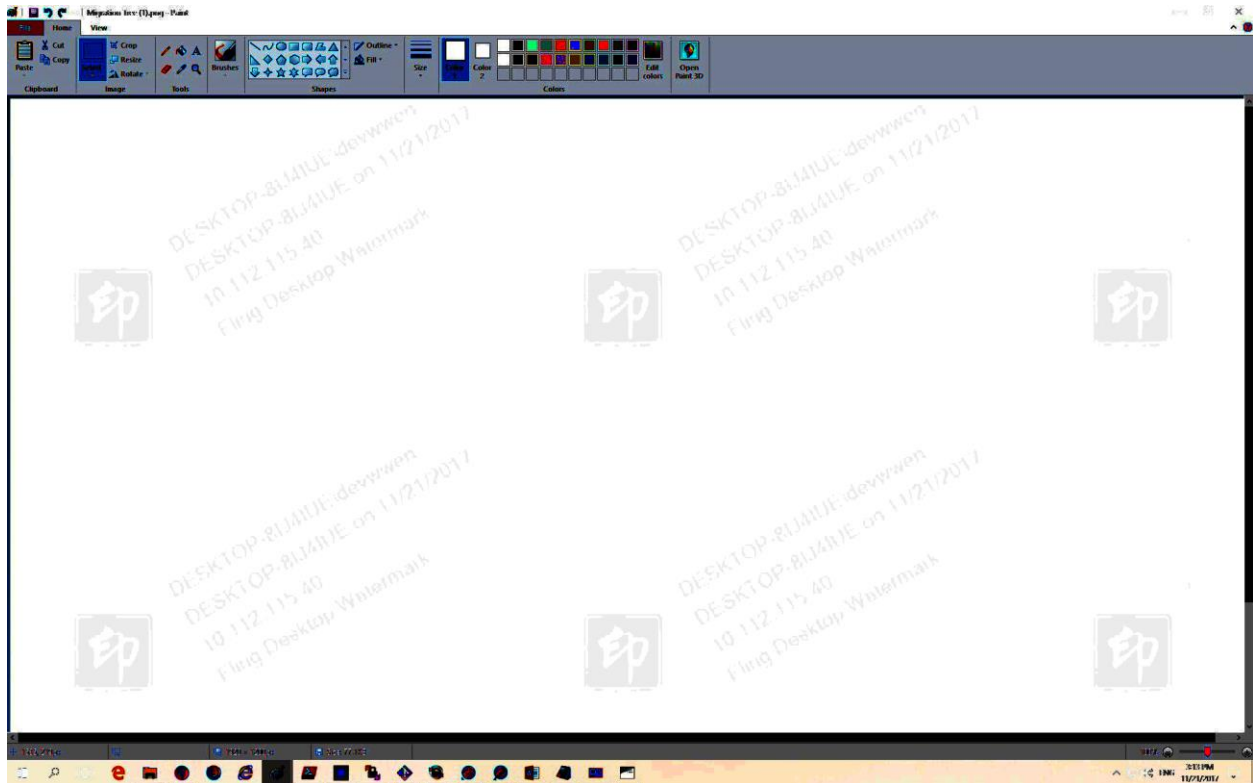


2. open **Reveal.exe** at “C:\Program Files (x86)\VMware\Flings\Desktop Watermark\Reveal.exe”



3. Click inside the application to select the screenshot or just drag and drop the screenshot image into **Reveal.exe**

4. Watermark is displayed



4 Appendix

Windows Registry contains details of the Desktop Watermark. User can change the watermark appearance and content using Windows Registry directly. Location of Desktop Watermark is:

"\HKEY_LOCAL_MACHINE\SOFTWARE\VMware, Inc.\Flings\DesktopWatermark"

Computer\HKEY_LOCAL_MACHINE\SOFTWARE\VMware, Inc.\Flings\DesktopWatermark

Computer	Name	Type	Data
HKEY_CLASSES_ROOT	ab (Default)	REG_SZ	(value not set)
HKEY_CURRENT_USER	ab BackColor	REG_SZ	Transparent
HKEY_LOCAL_MACHINE	ab Font	REG_SZ	Microsoft Sans Serif, 24pt
BCD00000000	ab FontColor	REG_SZ	Gray
HARDWARE	ab ImagePath	REG_SZ	C:\Program Files (x86)\VMware\Flings\Desktop W...
SAM	ab ImageTextLocation	REG_SZ	RightBottom
SECURITY	ab LinesFormat	REG_SZ	%UserDomain%\%UserName%;%ComputerName...
SOFTWARE	ab LineSpacing	REG_SZ	10
7-Zip	ab Margin	REG_SZ	100
BlueStacks	ab Opacity	REG_SZ	0.00999999977648258
Classes	ab RotateAngle	REG_SZ	330
Clients	ab ScreenLocation	REG_SZ	Fill
Dell			
GitForWindows			
Google			
Intel			
JavaSoft			
JreMetrics			
Macromedia			
Martin Prikyrl			
McAfee Safe Connect			
McAfee.com			
mcafeeupdater			
Microsoft			
Mozilla			
mozilla.org			
MozillaPlugins			
Node.js			
ODBC			
OEM			
Partner			
Policies			
RegisteredApplications			
Scooter Software			
Teradici			
ThinPrint			
VMware, Inc.			
Flings			
DesktopWatermark			