

Citrix and VMware How These Technologies Work Together

Daniel Euteneuer, Senior
Systems Engineer

Thomas Huber, Manager
Channel SE CEE

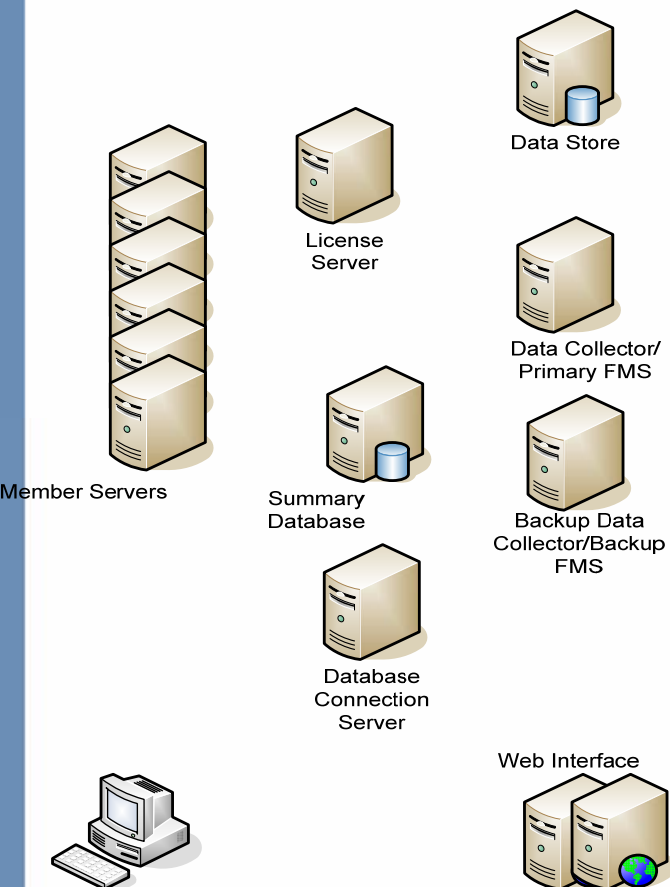


VMWORLD 2006

Agenda

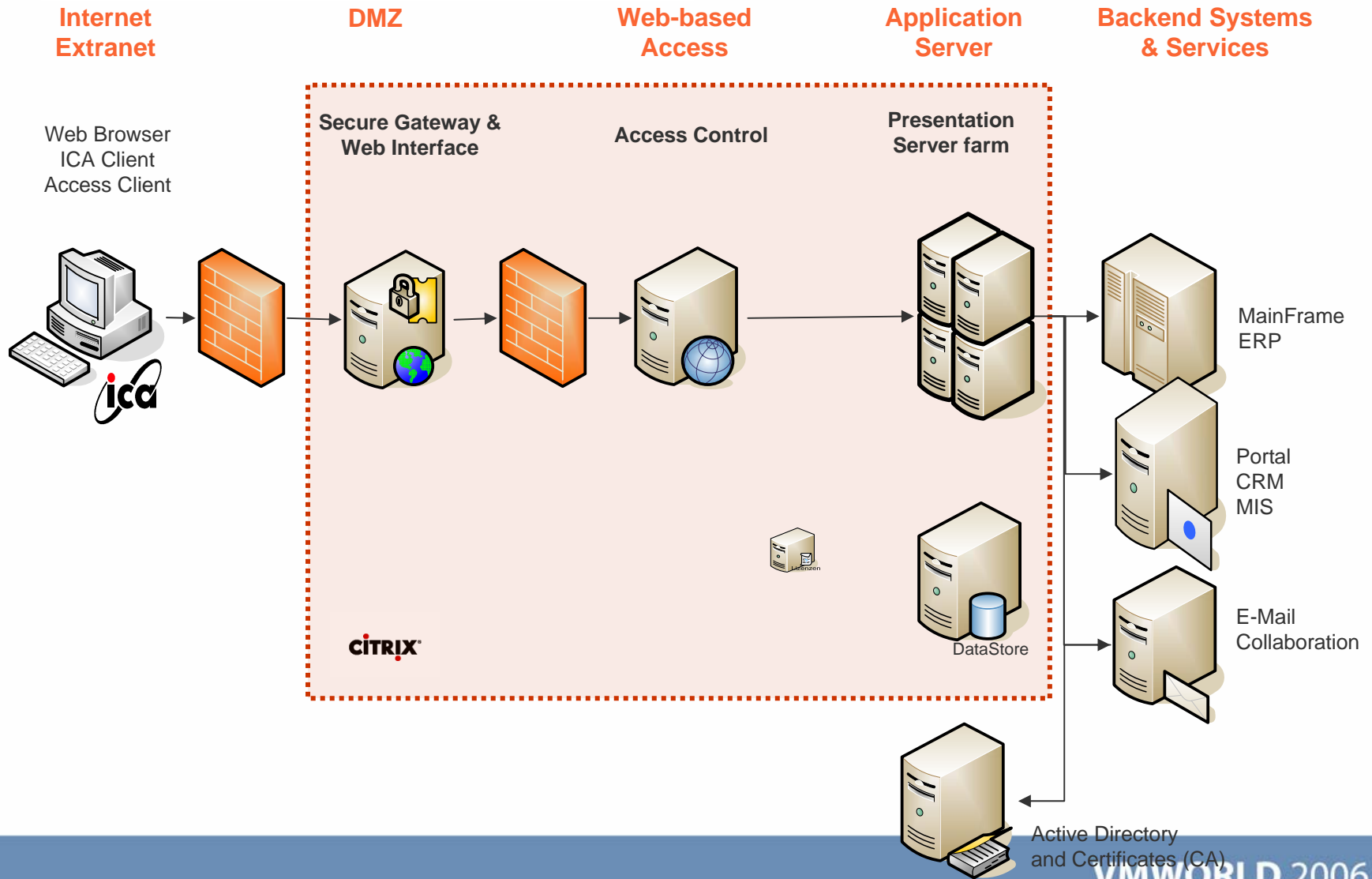
- Citrix and VMware basic concept
- Virtualizing Citrix Presentation Server
 - Performance comparison
 - LiveDemo
- VMware / Citrix Desktop Virtualization
 - Remote Desktop Broker
 - LiveDemo

Citrix Access Suite Components



- Presentation Server
 - Data Store, Data Collector,
 - Summary Database
 - Web Interface & Secure Gateway
- Access Gateway & Access Control
 - Database Server, Agent Server, Web Server, HTML Preview Server, Index-Server
- Password Manager
 - Central Credential Store
 - Password Manager Service
- License Server=

Default Citrix Environment



HA Citrix Environment

Internet
Extranet

DMZ

Web-based
Access

Application
Server

Backend Systems
& Services

Web Browser
ICA Client
Access Client

Secure Gateway &
Web Interface

Access Control

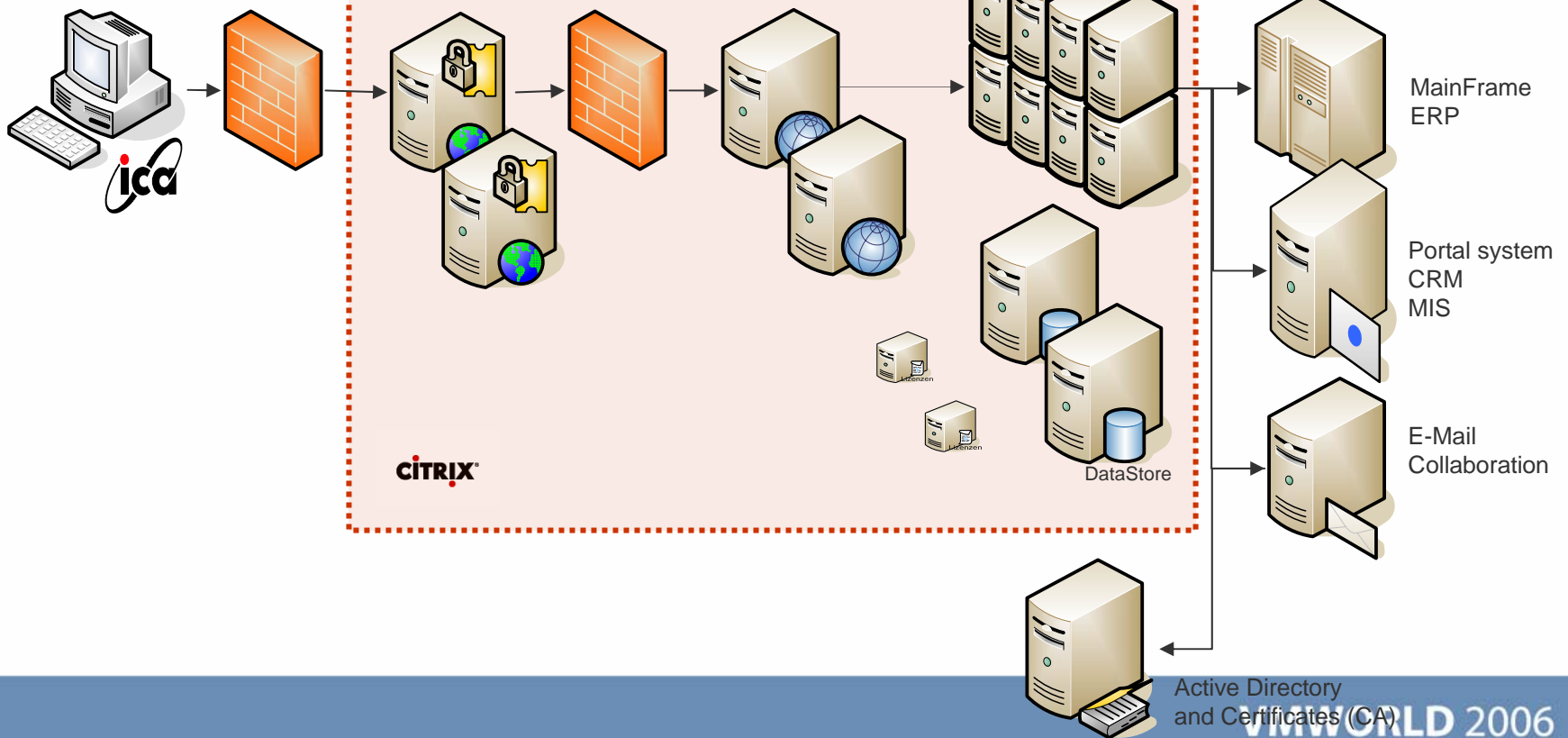
Presentation
Server farm

MainFrame
ERP

Portal system
CRM
MIS

E-Mail
Collaboration

Active Directory
and Certificates (CA)



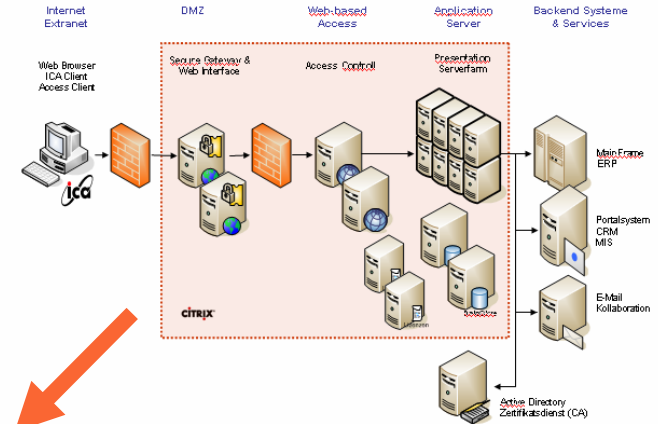
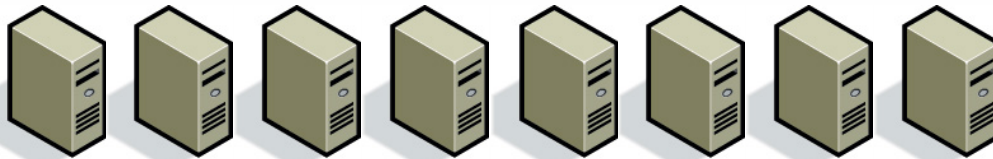
Consolidation of Citrix Components

Citrix Presentation Server

CSG
License Server
Access Control
Database
...



VMware HA & DRS



Benefit:

High Availability and Load Balancing for you Citrix components using VMware DRS and HA

Citrix and Citrix on VMware a performance comparison



VMWORLD 2006

What has been tested?

- Citrix performance on a physical HP DL585
 - 4 AMD Opteron 875 dualcore, 32 GB RAM
- Citrix performance on a single proc VM
 - Running on ESX Server 2.5
 - Running on ESX Server 3.0

What have we been looking for?

- Number of users and cpu load on a physical Citrix server running a specific load script
- Number of users and cpu load in the Citrix VM running the same load script

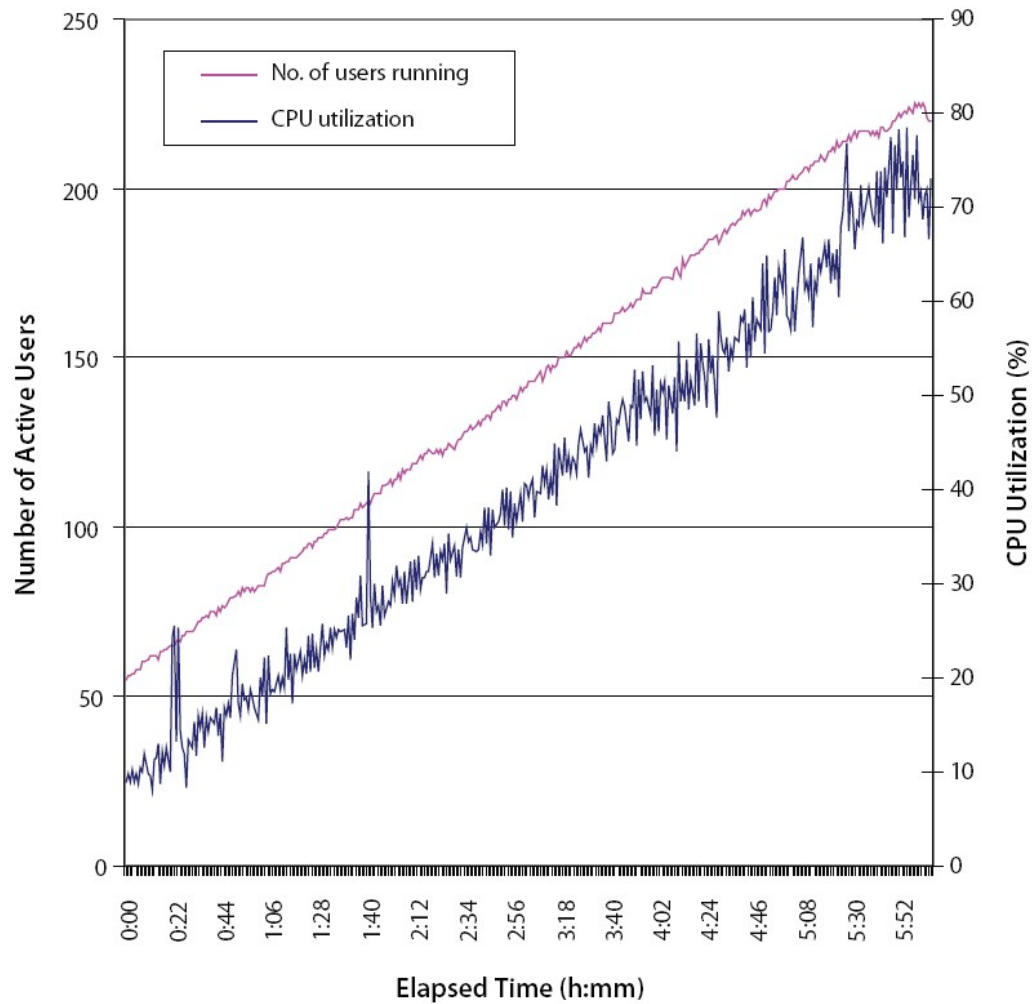
Test Hardware

- HP Proliant DL 585
 - 4 AMD Opteron 875 dual-core cpus 2.2 GHz
 - 32 GB RAM
- Native
 - Windows Server 2003 Enterprise Edition
 - Citrix Presentation Server 4.0
- ESX Server
 - ESX Server 3.0
 - Windows Server 2003 Enterprise Edition
 - Citrix Presentation Server 4.0

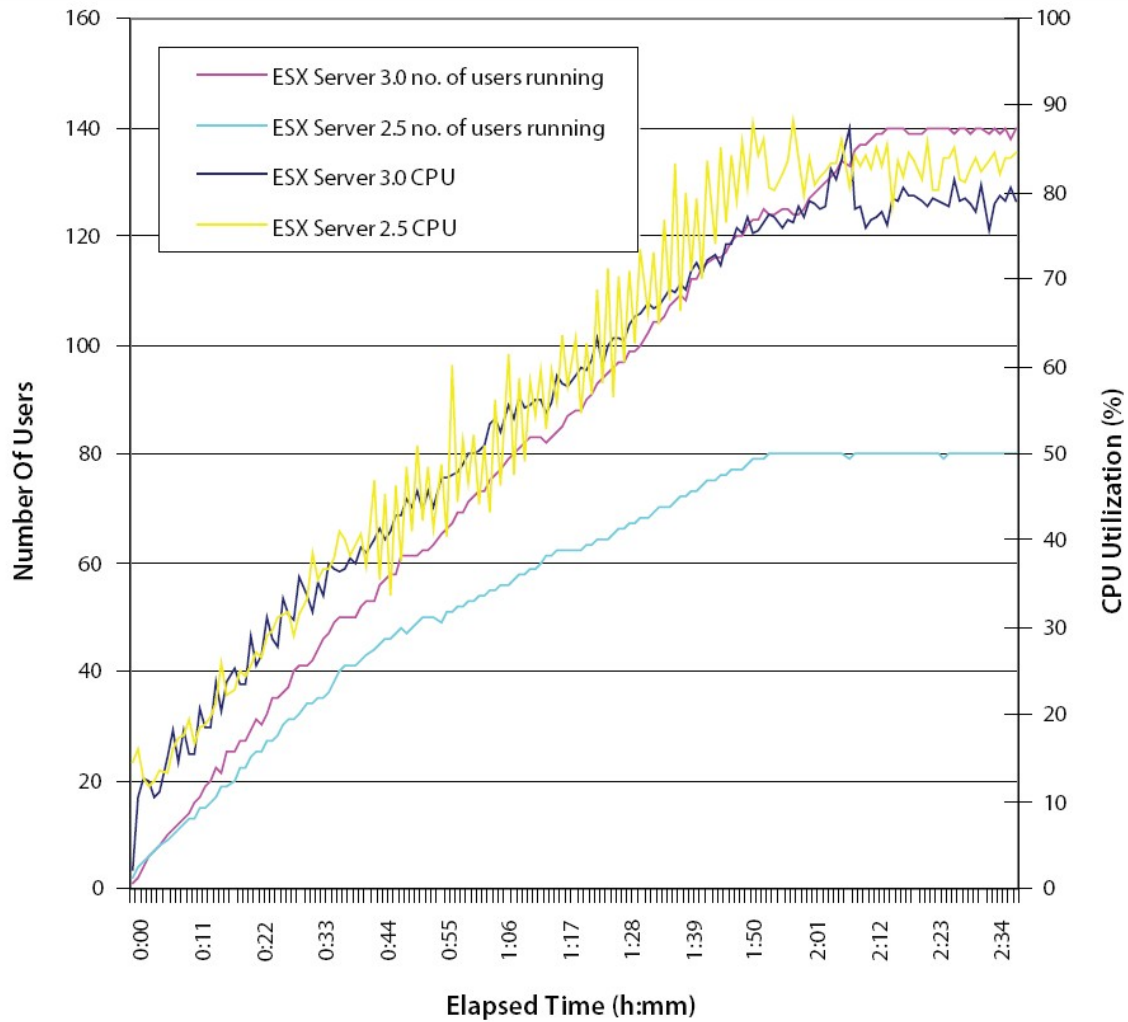
Test Setup

- Load on the servers was generated using a Citrix client script to fire up multiple ICA sessions to the Citrix servers
- Script ran in a loop and was timed from launch to end of execution
- During the test we looked for a significant and sustained deviation in script execution time to determine max load.
- We also looked for the point where performance was not consistent in a control session (this is one key factor in perceived performance of a solution). During the test we kept a session open on the targeted server and used it to open web pages and apps
- Testing order
 - Citrix on physical HP DL585 hardware
 - Citrix on ESX Server

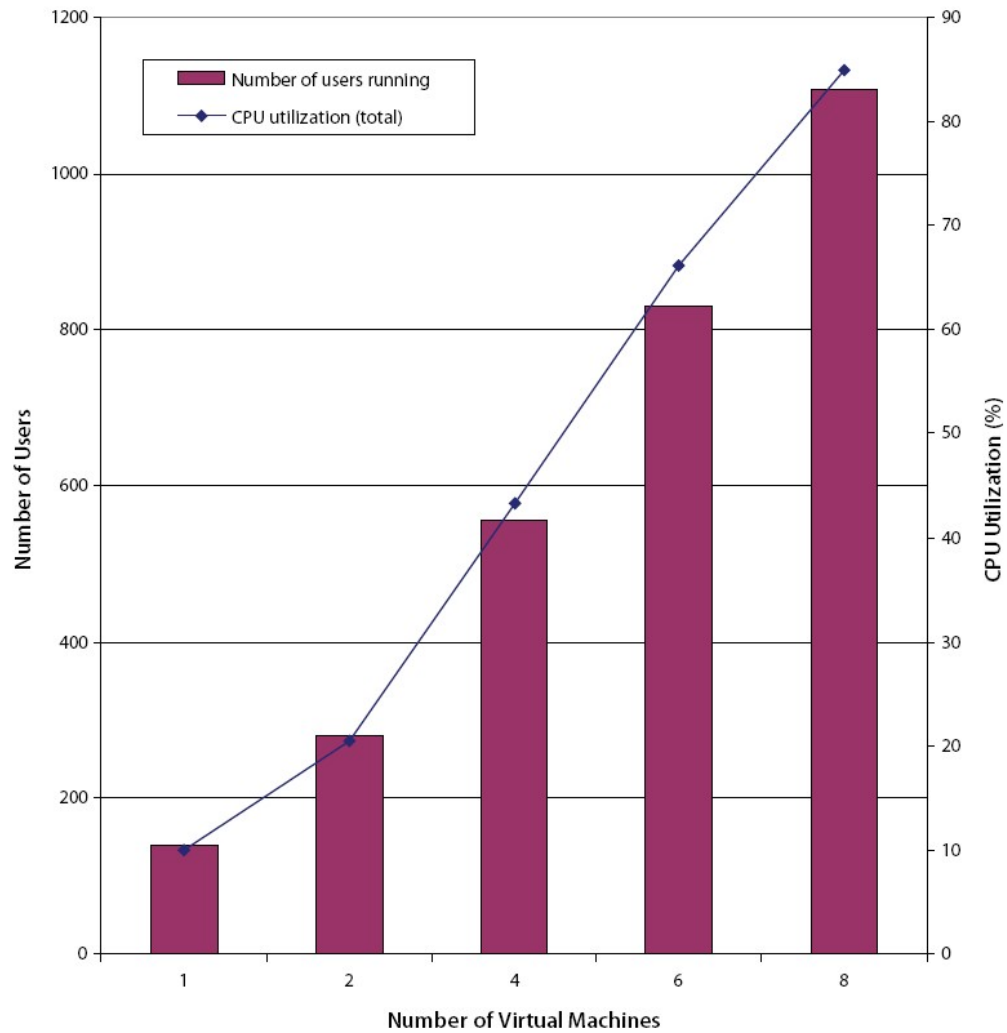
Test Results (CPS on DL585)



Test Results (CPS in VM on DL585)



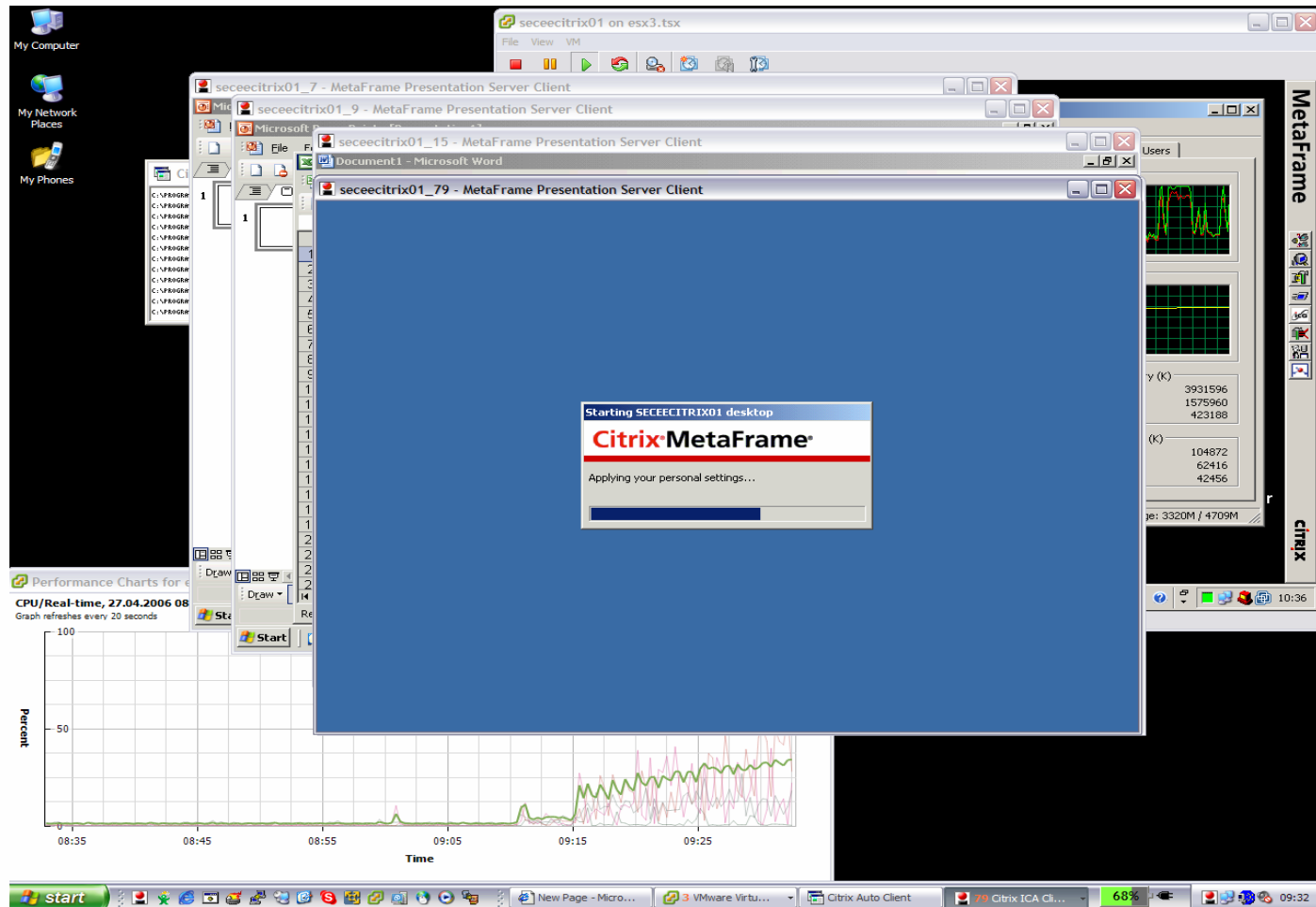
Scalability

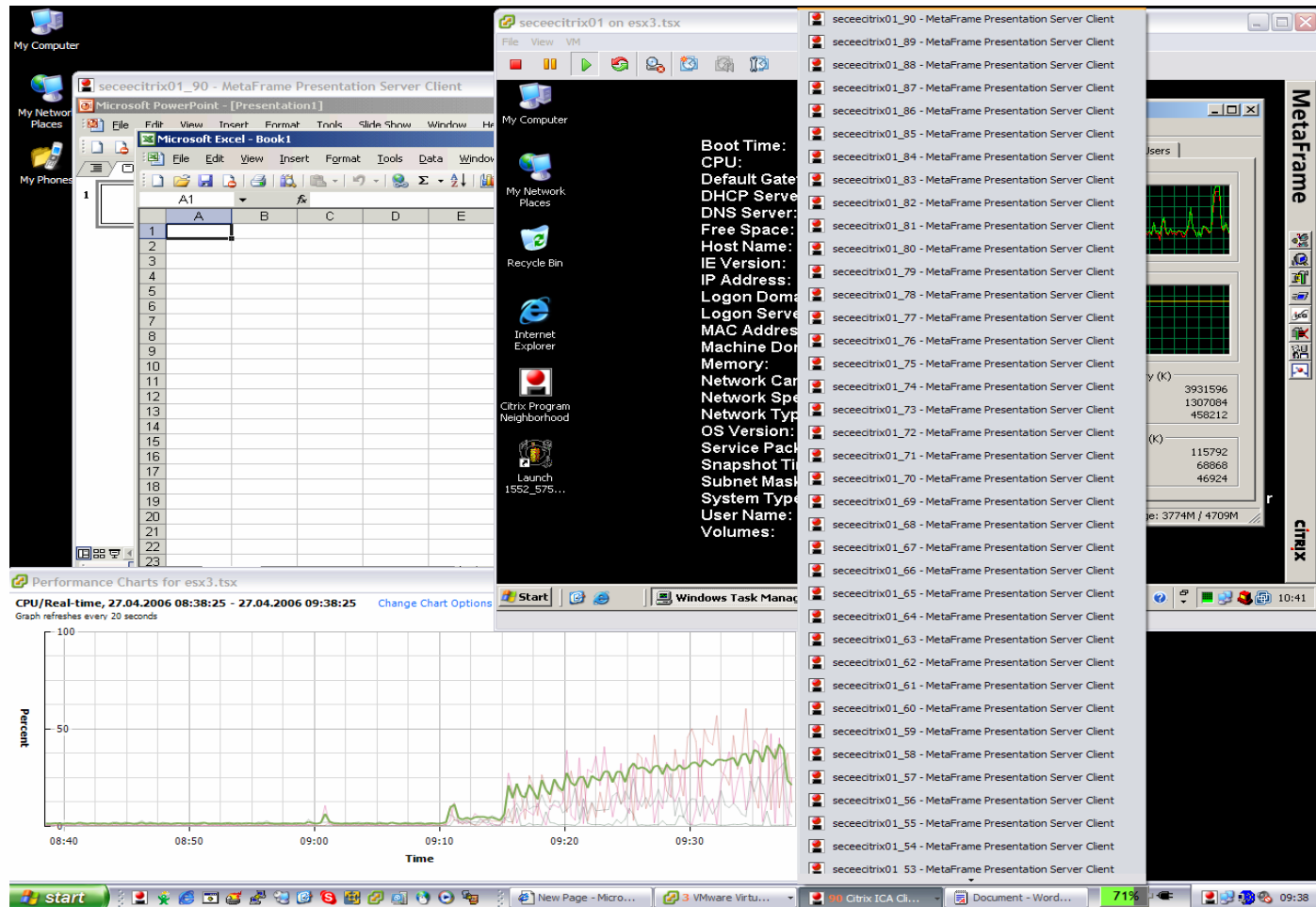


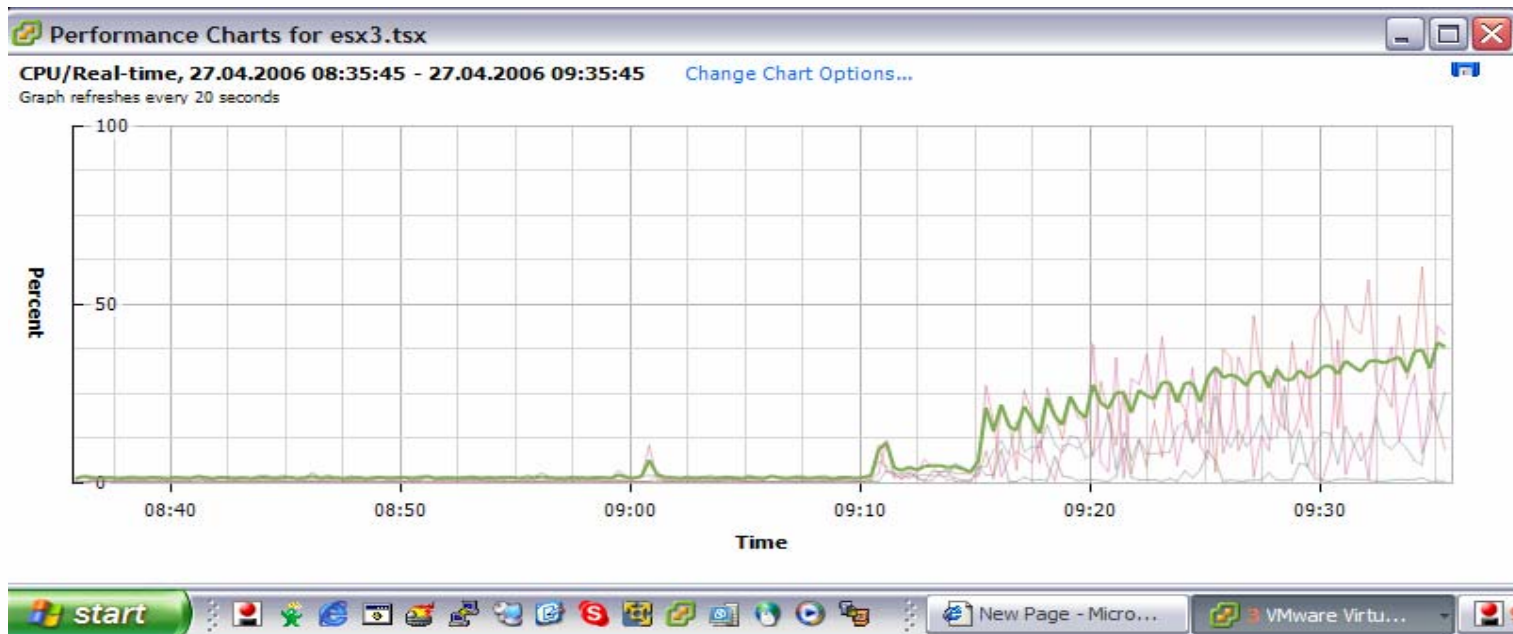
Live Demo

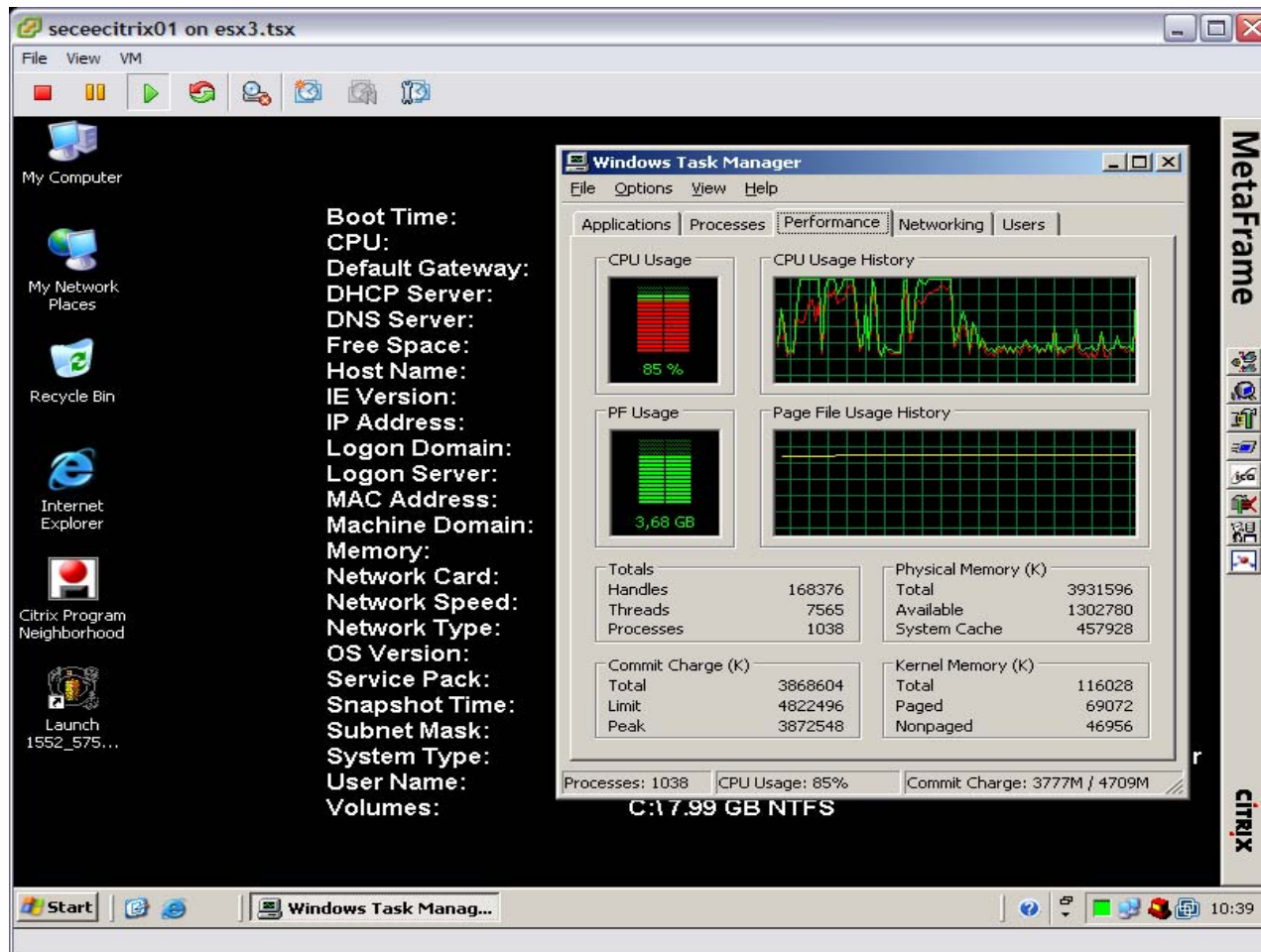


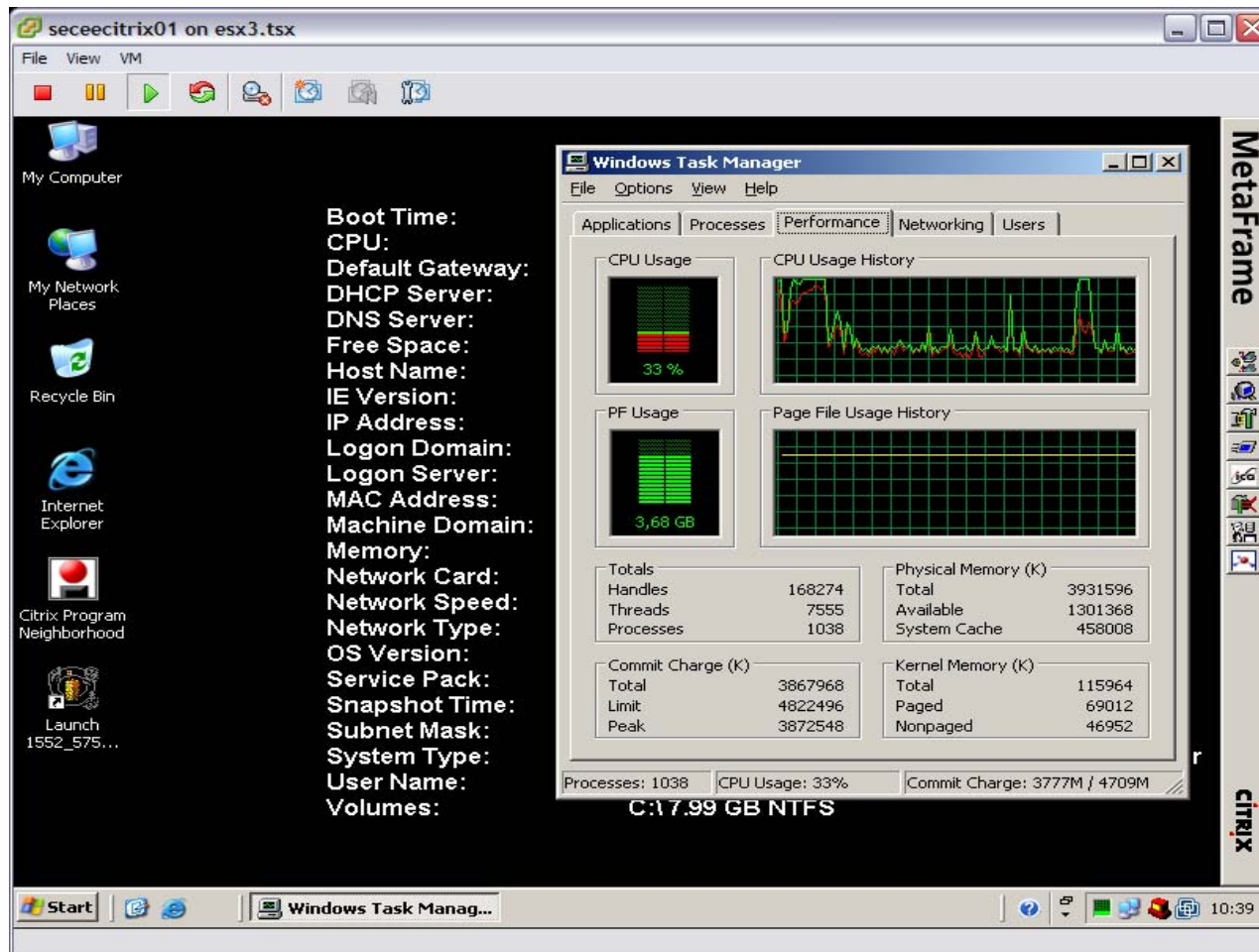
VMWORLD 2006

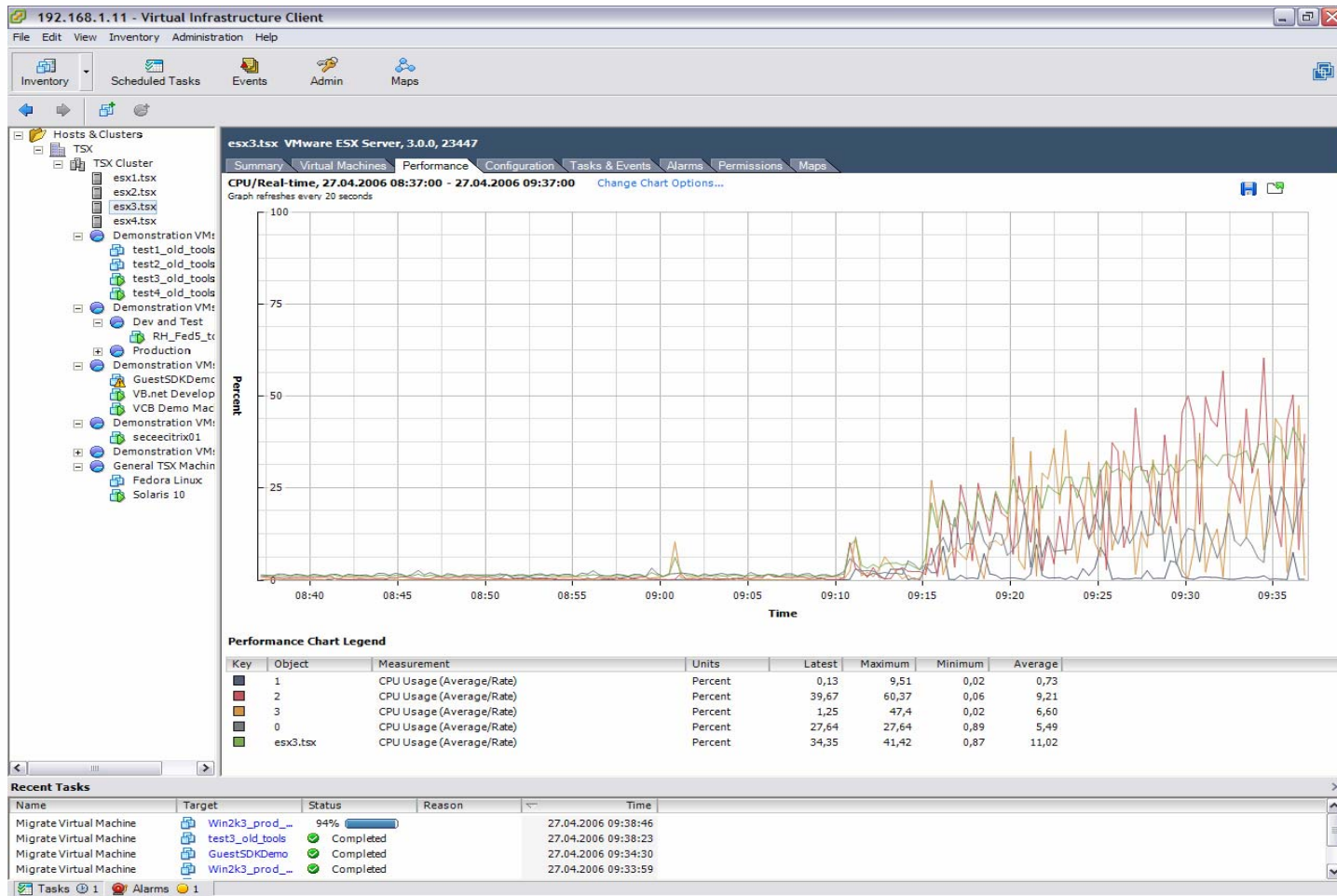












192.168.1.11 - Virtual Infrastructure Client

File Edit View Inventory Administration Help

Inventory Scheduled Tasks Events Admin Maps

Hosts & Clusters

- TSX
 - TSX Cluster
 - esx1.tsx
 - esx2.tsx
 - esx3.tsx
 - esx4.tsx
 - Demonstration VM:
 - test1_old_tools
 - test2_old_tools
 - test3_old_tools
 - test4_old_tools
 - Demonstration VM:
 - Dev and Test
 - RH_Fed5_tx
 - Production
 - Demonstration VM:
 - GuestSDKDemo
 - VB.net Develop
 - VCB Demo Mac
 - Demonstration VM:
 - seceditrx01
 - Demonstration VM:
 - General TSX Machin
 - Fedora Linux
 - Solaris 10

esx3.tsx VMware ESX Server, 3.0.0, 23447

Summary Virtual Machines Performance Configuration Tasks & Events Alarms Permissions Maps

Name, State, Host or Guest OS contains: Clear

Name	State	Status	CPU - MHz	Memory - MB	Notes
Fedora Linux	Powered Off	○○○	0	0	
Fedora 5 Template	Powered Off	○○○	0	0	
seceditrx01	Powered On	○○●	1441	983	

Recent Tasks

Name	Target	Status	Reason	Time
Migrate Virtual Machine	GuestSDKDemo	Completed		27.04.2006 09:39:11
Migrate Virtual Machine	Win2k3_prod_	Completed		27.04.2006 09:38:46
Migrate Virtual Machine	test3_old_tools	Completed		27.04.2006 09:38:23
Migrate Virtual Machine	GuestSDKDemo	Completed		27.04.2006 09:34:30

Tasks Alarms 3

VMware / Citrix Published Desktop Usage and Deployment

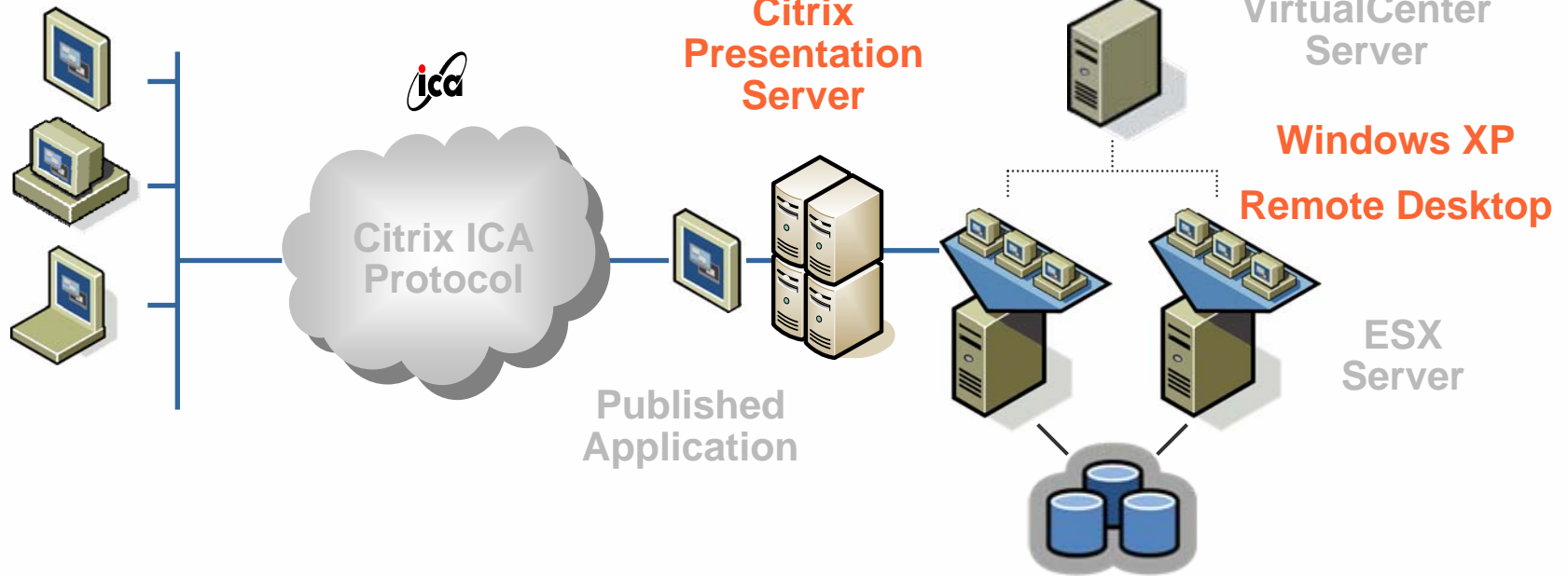


VMWORLD 2006

Virtual Desktop Infrastructure

Client Device
(Thin Client or PC)

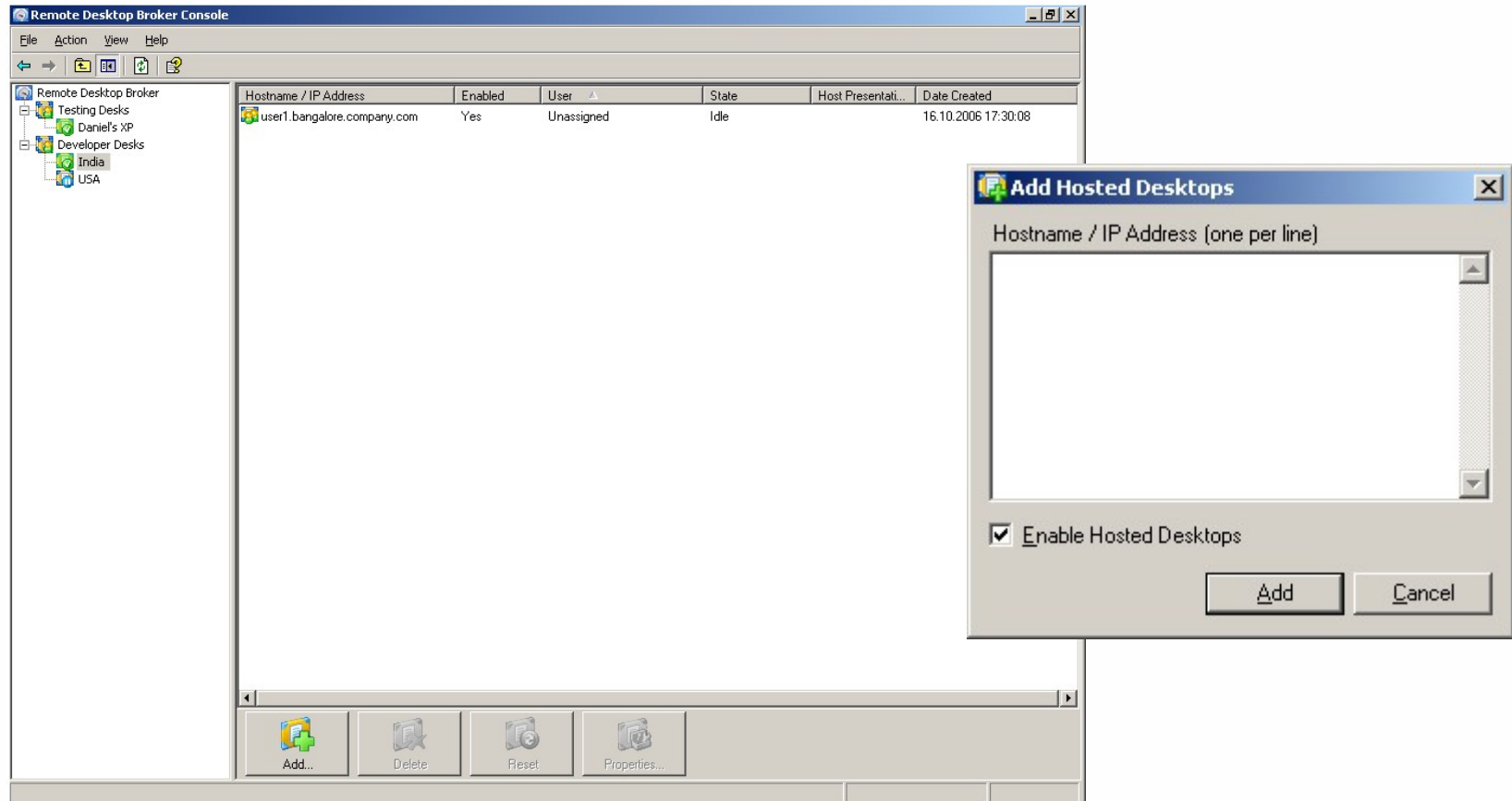
Virtual
Infrastructure



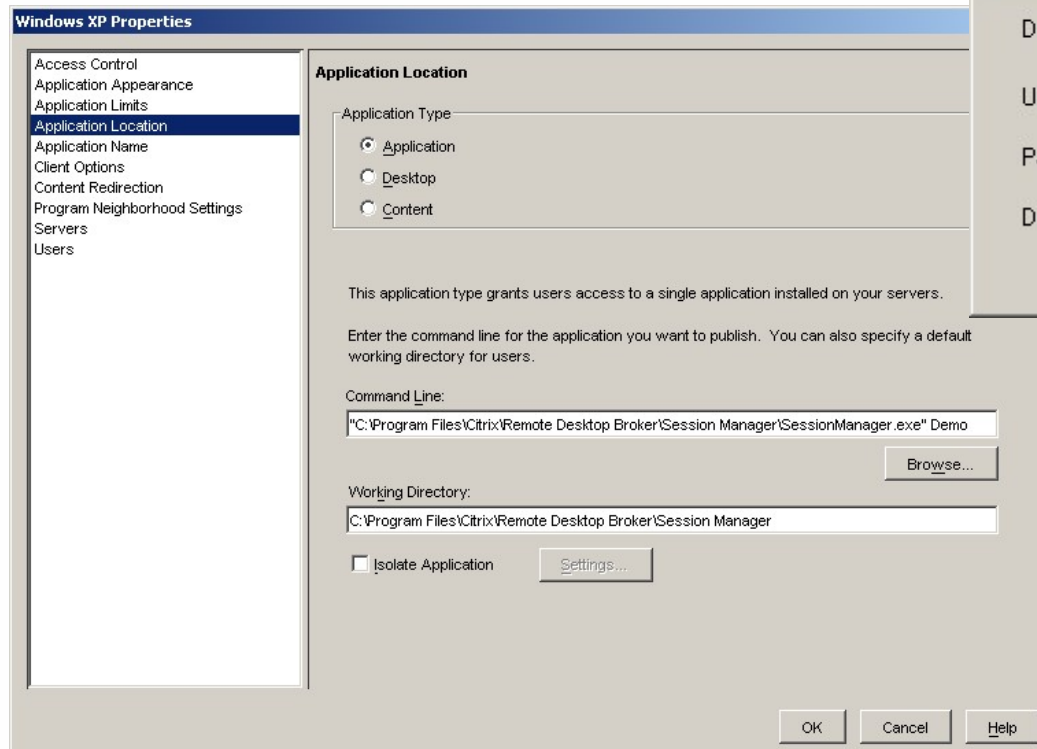
Citrix Remote Desktop Broker

- Integrate Windows XP Desktops into your Citrix Presentation Server Environment
- Easy deployment and user management for Windows XP desktops

Live Demo



Live Demo



Q&A

Questions?

deuteneuer@vmware.com

thuber@vmware.com

Recommended Sessions

- MED0096 - Citrix and VMware: A Range of Customer Solutions, Paul Hahn, Citrix
- MED0115 - Optimizing Citrix Presentation Server on VMware ESX Server, Paul Hahn, Citrix
- MED9518 - Virtual Desktop Infrastructure: How to use VMware ESX Server to Consolidate Desktops, Russel Wilkinson, VMware

Presentation Download

Please remember to complete your
session evaluation form
and return it to the room monitors
as you exit the session

The presentation for this session can be downloaded at
<http://www.vmware.com/vmtn/vmworld/sessions/>

Enter the following to download (case-sensitive):

Username: cbv_rep
Password: cbvfor9v9r

Some or all of the features in this document may be representative of feature areas under development. Feature commitments must not be included in contracts, purchase orders, or sales agreements of any kind. Technical feasibility and market demand will affect final delivery.

VMWORLD 2006

