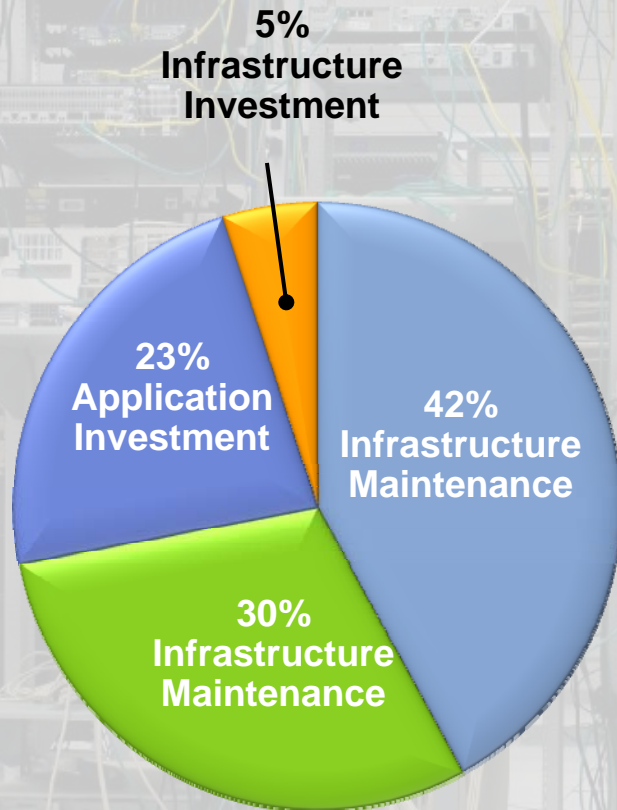


VMware Management and Automation

Q2 2009

The Reality in Most Datacenters

Where the IT Budget Goes



- Overwhelming complexity
- >70% of IT budgets just to keep the lights on
- <30% of IT budgets goes to innovation and competitive advantage

**Business Can Change
Only as Fast
as IT Can**

The Dilemma

- > **Speed of change**
- > **Scalability**
- > **Efficiency**

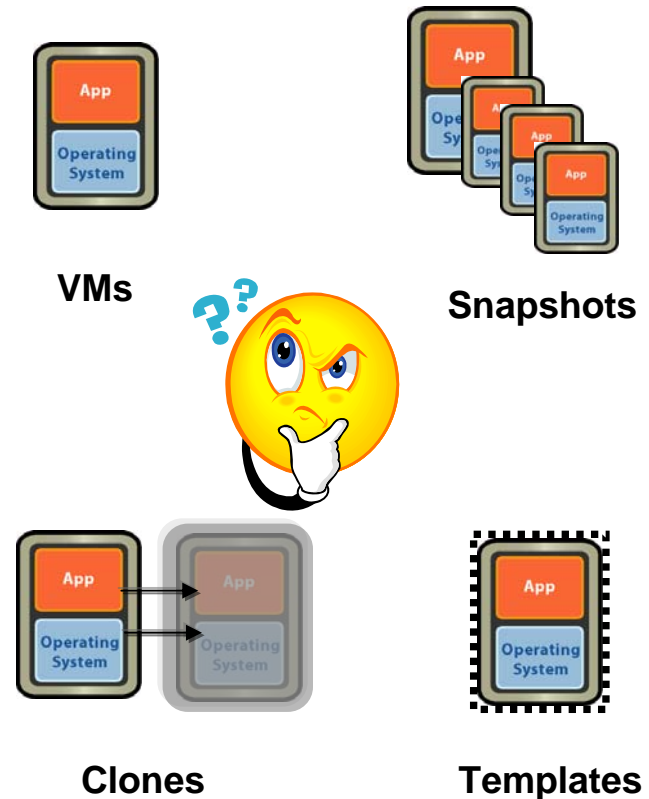
Automation

- > **Control**
- > **Predictability**
- > **Consistency**

Virtualization Fundamentally Changes the Game

New Considerations

- **New items and relationships not present in physical environment**
 - New entities to manage: VMs, templates, clones, etc.
 - New attributes and relationships: snapshots, lineage, mappings
 - New associated actions: VMotion, clone, record/replay



Virtualization Fundamentally Changes the Game

New Considerations

- **Dynamic and fast growing environment**
 - Workload location changes
 - Quick entry/exit of VMs
 - Temporal state of VMs (e.g., suspend, delete)
 - Lower barriers to change



Virtualization Fundamentally Changes the Game

New Opportunities

- **Enables greater automation**
 - VMs are standardized software containers
 - Software files that can easily be move, copied, managed
 - New types of automation operations are available (clone, VMotion, snapshot)



Virtualization Fundamentally Changes the Game

New Opportunities

- **Properties can be leveraged to solve IT management problems in a new way**
 - Linked clone provisioning, capacity over-subscription
 - Ease of introspection
 - Ability to control any VI action via policies
 - Auto-remediation to meet performance, availability, security SLAs



Evolution of Virtualization Management

Phase 1

Element management of **hypervisors** and **VMs**



Transition physical to virtual,
manage new element types

Assess, convert to virtual,
manage inventory, VM
provisioning, patching

Phase 2

Management of a
**distributed, dynamic,
shared** infrastructure



Manage large & complex virtual
datacenters that run tier 1
workloads

Scalability, configuration
automation and compliance,
operations mgmt

Phase 3

Management of an
internal cloud



Utility computing - policy driven
lights-out automation

Self service, policy driven
automation, IT service costing,
SLA based mgmt

vCenter Suite

Self Service Management

Self Service
Portal

Service
Catalog

Billing/
Chargeback

SLA Driven
Management
Model

Availability



99.99%

Security



High

Performance



.2 Milli-
seconds

Infrastructure Management

Provisioning

Configuration

Capacity

Operations

Performance

Availability

Cloud Operating System

VMware vSphere™ – The Industry's First Cloud Operating System

Application
Services

**vSphere 4.0
Cloud OS**

Infrastructure
Services

- Clustering
- Data Protection

Availability

- Firewall
- Anti-virus
- Intrusion Prevention
- Intrusion Detection

Security

- Dynamic Resource Sizing

Scalability

vCompute

- Hardware Assist
- Enhanced Live Migration Compatibility

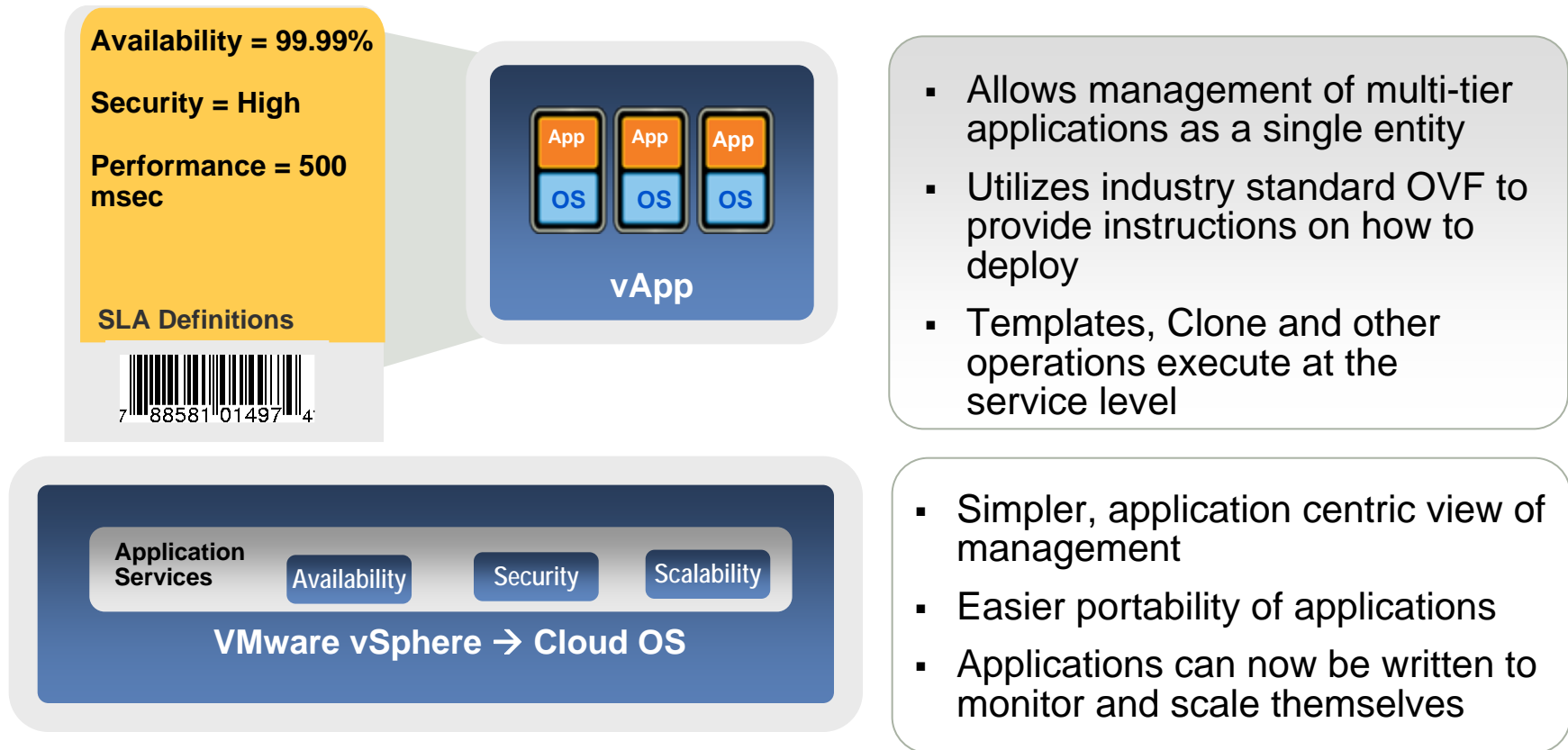
vStorage

- Storage Management & Replication
- Storage Virtual Appliances

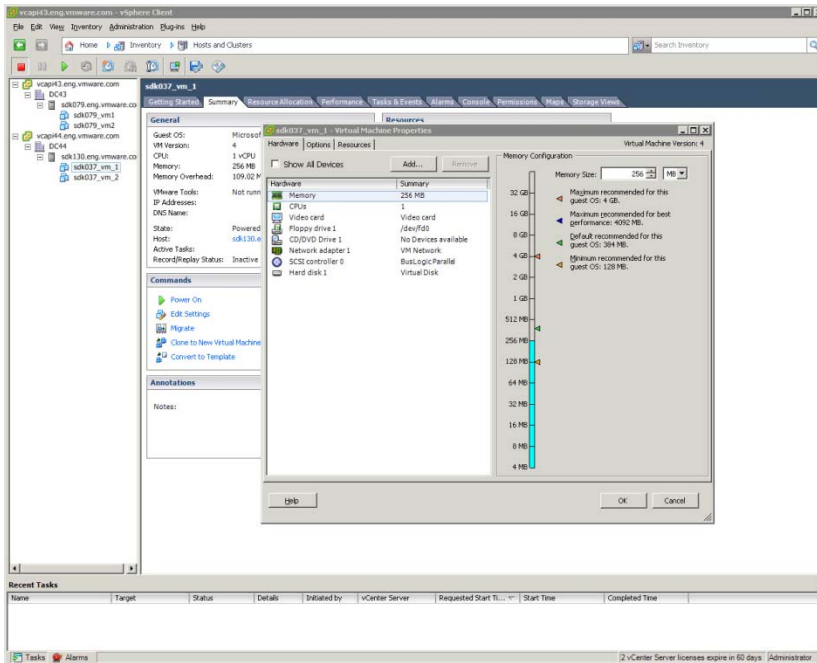
vNetwork

- Network Management

vApp – New Model for Describing and Deploying Apps



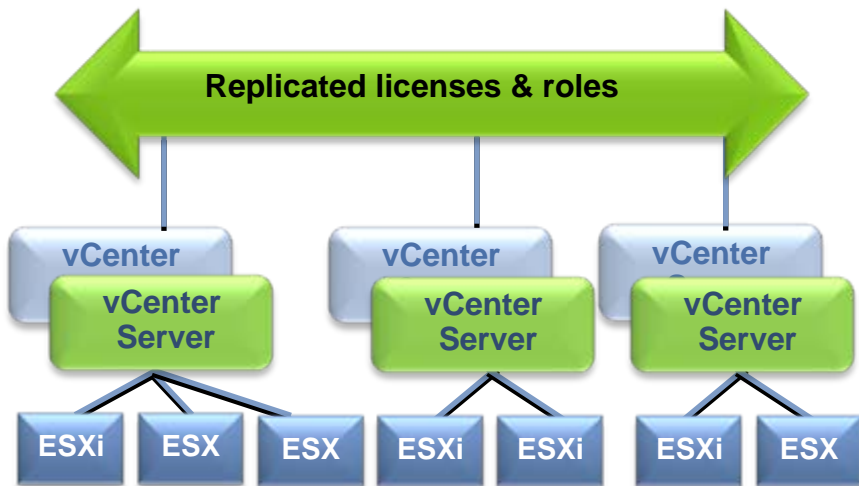
vCenter Server: Unified, centralized management for the dynamic Cloud-OS



- Consolidated and simplified management of infrastructure, including servers, storage, networking
- Centralized management of vCenter Server instances, ESX hosts, VMs
- Performance and health monitoring
- Extensible platform

Scalable vCenter Platform

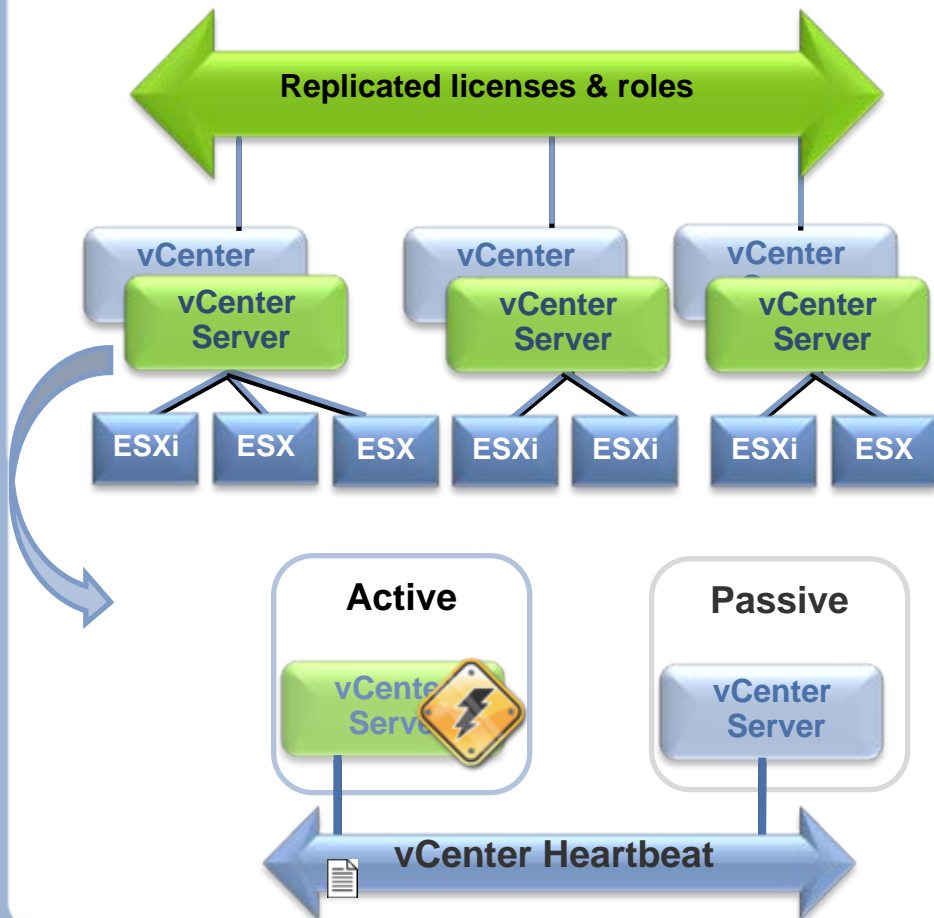
vCenter Linked Mode



- Role and license data available globally via LDAP backbone
- Standard VI Client can access inventory across entire environment
- Search and action based interface allows VI Client to manage across multiple vCenter Servers
- Enables scale out of managed infrastructure

Scalable vCenter Platform

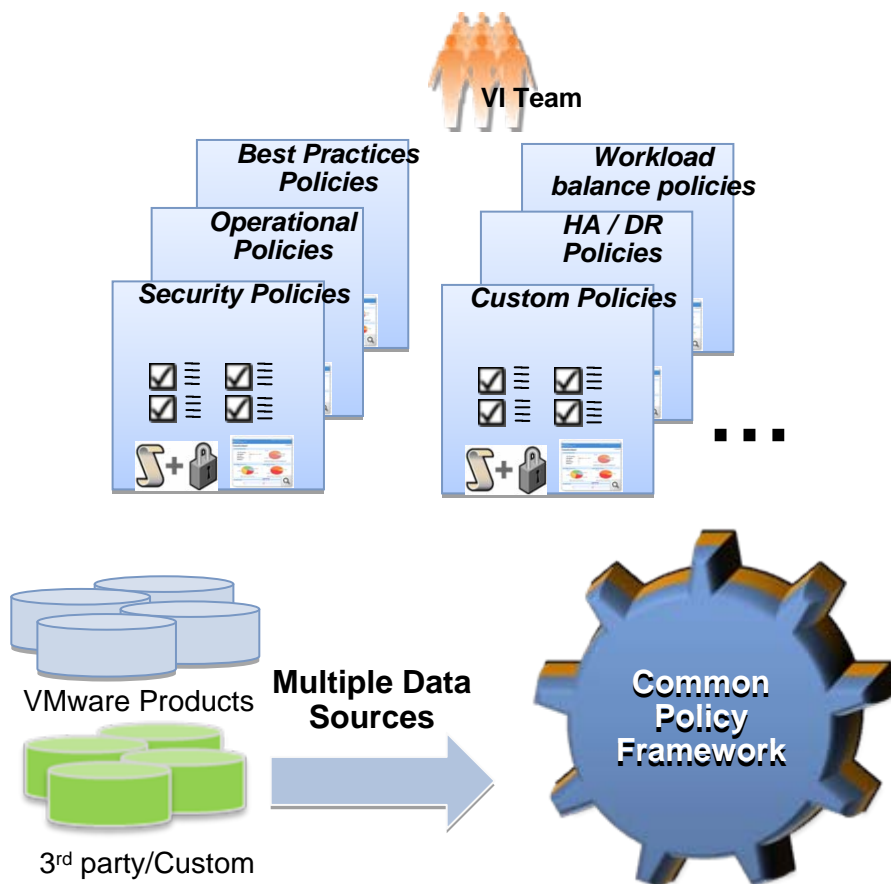
vCenter Linked Mode



- Role and license data available globally via LDAP backbone
- Standard VI Client can access inventory across entire environment
- Search and action based interface allows VI Client to manage across multiple vCenter Servers
- Enables scale out of managed infrastructure

- High Availability solution for vCenter Server
 - Protect against hardware, operating system, application, database failures
 - Lower complexity
- Provides vCenter specific monitoring capabilities (license server)
 - Flexible deployment scenarios (physical/virtual/WAN combinations)
- Uses host based replication to keep the application state consistent

vCenter Orchestrator Unified Real-time Policy Framework

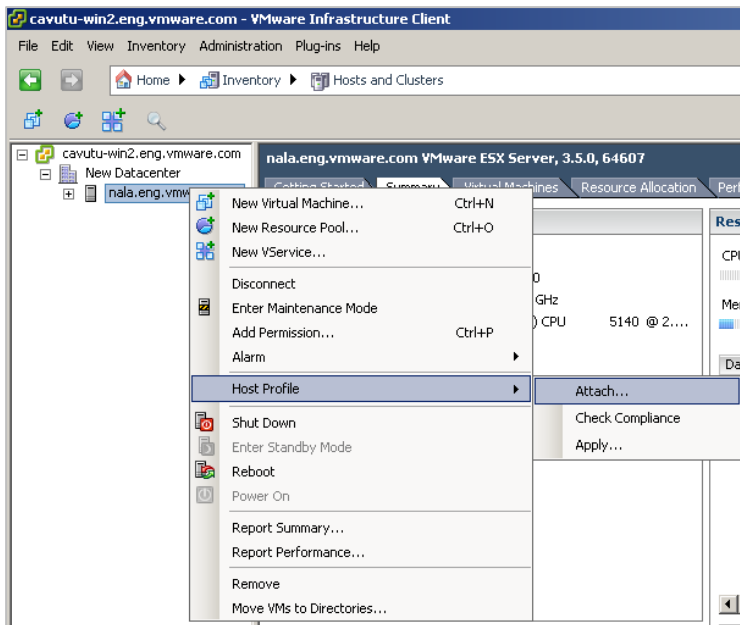


- Enables high degree of automation via codifying decision making and mass action
- Enables closed loop infrastructure management across different tools
- Helps reduce OpEx via improved resource utilization, enhanced SLAs, improved management efficiency & IT responsiveness

- Common, unified underlying infrastructure service for policy management and policy execution
- Real-time, light-weight & high performance
- Extensible: data source, evaluator, action context, authoring

vCenter Host Profiles

Policy-based one-click mass configuration automation



- Quick mass automation or complex configuration automation across VI for large number of ESX hosts/clusters
- Automate replicating a golden profile from a host to other hosts via baselines
- Remediate out of policy compliance violations
- View drift from golden baselines

vCenter Suite

Self Service Management

Self Service
Portal

Service
Catalog

Billing/
Chargeback

SLA Driven
Management
Model

Availability



99.99%

Security



High

Performance



.2 Milli-
seconds

Infrastructure Management

Provisioning

Configuration

Capacity

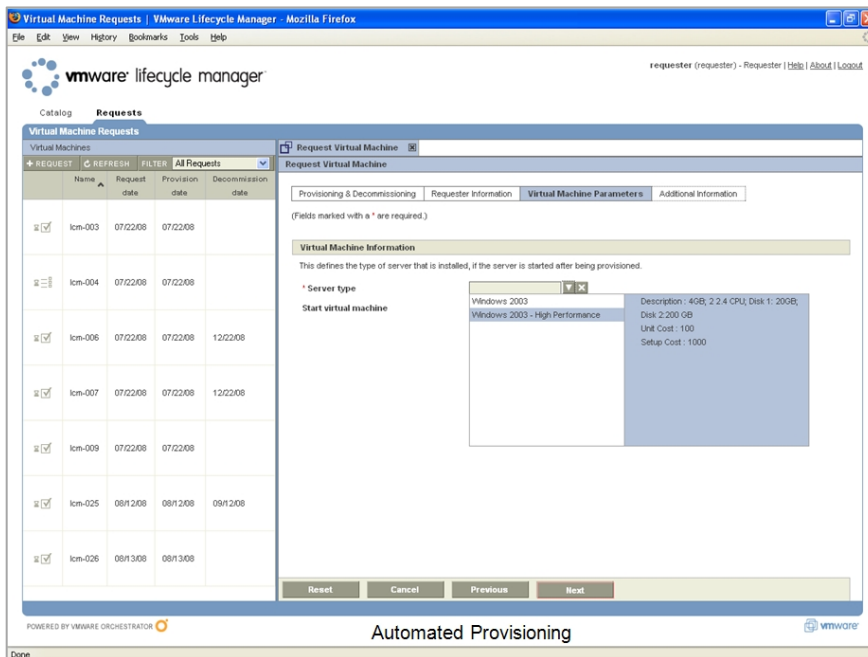
Operations

Performance

Availability

Cloud Operating System

*Automated provisioning and decommissioning
increase service levels and control.*

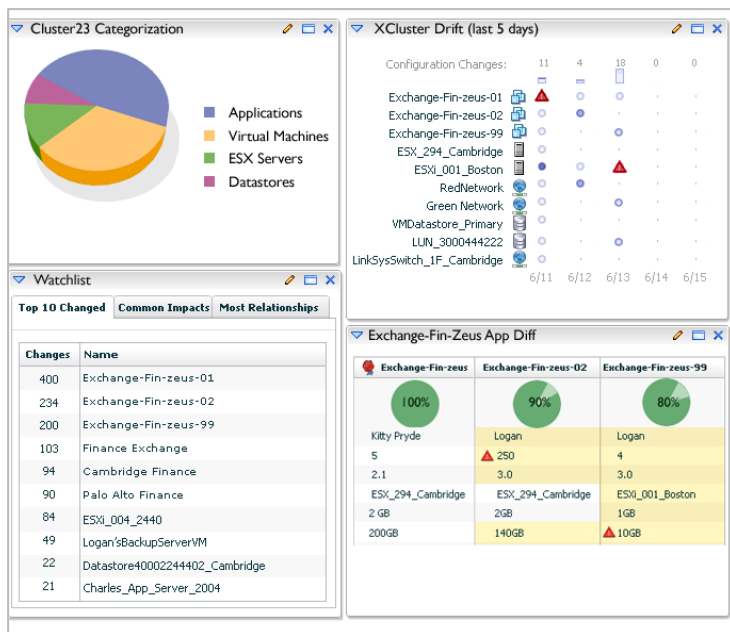


- Auto-provision and deploy VMs based on pre-defined standards
- Utilized proper resources based on VM type and purpose
- Track VM owners and purpose; implement changes as needed
- Decommission to reclaim resources

- Eliminate manual, repetitive admin tasks
- Set up end-to-end provisioning once and manage by exception
- Admins only select from existing and known template configurations owned by IT
- VMs always use the correct resources (datastores, networks, templates, etc.)
- Decommissioning tracked and implemented based on designated lifespan

vCenter ConfigControl

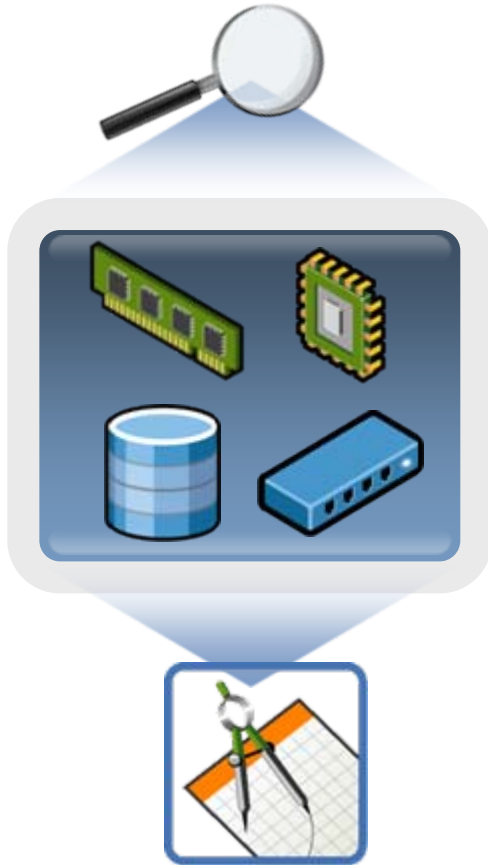
*Richer configuration data –
and a better way to get it.*



- Tracking of configuration items that are part of a virtual infrastructure
- Automated discovery of accurate config, dependency and historical data
- Application/IT visibility via rich modeling capabilities, dynamic search and reports

- Discover, track, model, search, analyze (impact and drift), report
- Standards based, extensible, comprehensive, continuous, multi-source capture of CIs
- Applications, inside guests, virtual entities, associated hw, custom tags
- Rollup impact reporting by business unit, organization unit, etc

vCenter CapacityIQ



Capacity intelligence for the virtual datacenter

- Deliver the right capacity at the right time
 - Make informed planning, purchasing, and provisioning decisions
 - Enable capacity to be utilized most efficiently and cost-effectively
-
- Perform “What-If” impact analysis to model effect of capacity changes
 - Identify and reclaim unused capacity
 - Forecast timing of capacity shortfalls and needs

vCenter AppSpeed

Policies (SLA)

- ✓ 99.9% Uptime
- ✓ Fault Protection
- ✓ Encryption Enabled

75
Users

4
Servers

1
Database

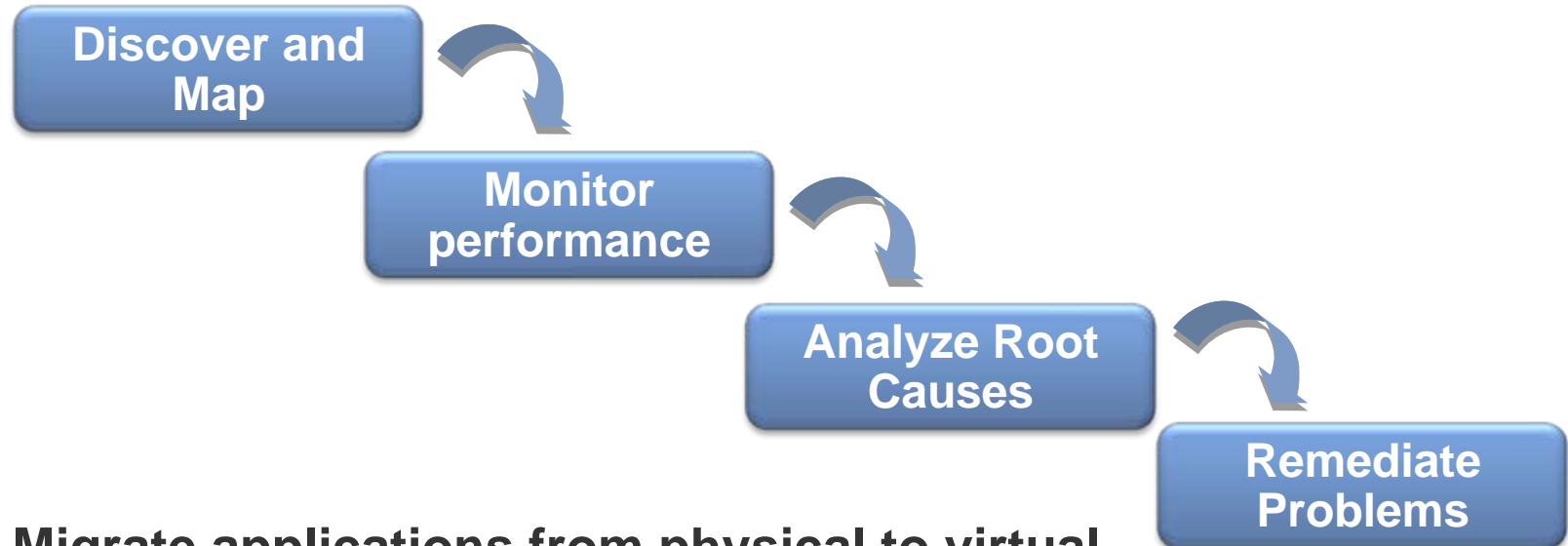
Quality of Service



- Monitor application performance from end-user perspective
 - Collect and correlate across tiers and in VI
 - Automated SLA management
-
- Enables proactive detection of end user performance issues
 - Integration with VI enables root cause and remediation

vCenter AppSpeed Use Scenarios

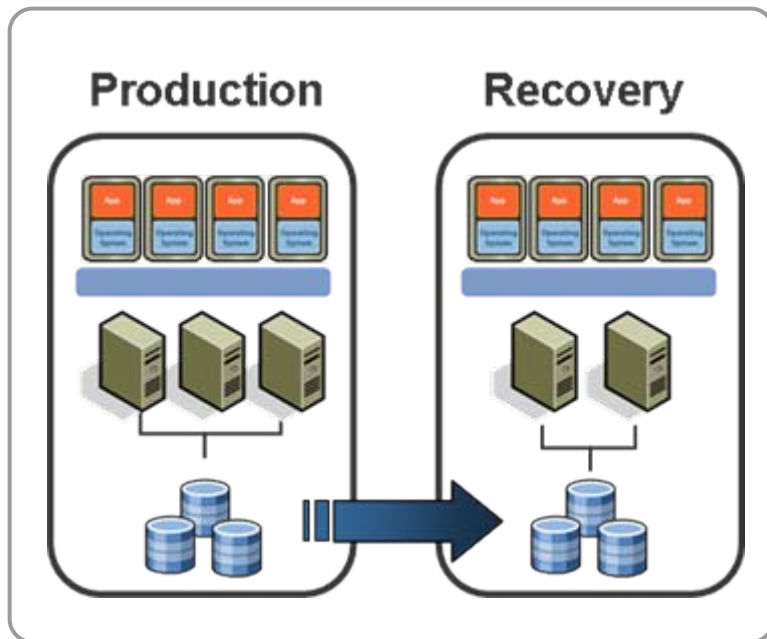
- 1 Allows IT to guarantee application service level



- 2 Migrate applications from physical to virtual



*Makes disaster recovery
rapid, reliable, manageable, affordable*



- Simplifies and automates disaster recovery workflows:
 - Setup, testing, failover, failback
- Turns manual recovery runbooks into automated recovery plans
- Provides central management of recovery plans from vCenter Server
- Easy integration with leading vendors' storage replication systems

vCenter Suite

Self Service Management

Self Service
Portal

Service
Catalog

Billing/
Chargeback

SLA Driven
Management
Model

Availability



99.99%

Security



High

Performance



.2 Milli-
seconds

Infrastructure Management

Provisioning

Configuration

Capacity

Operations

Performance

Availability

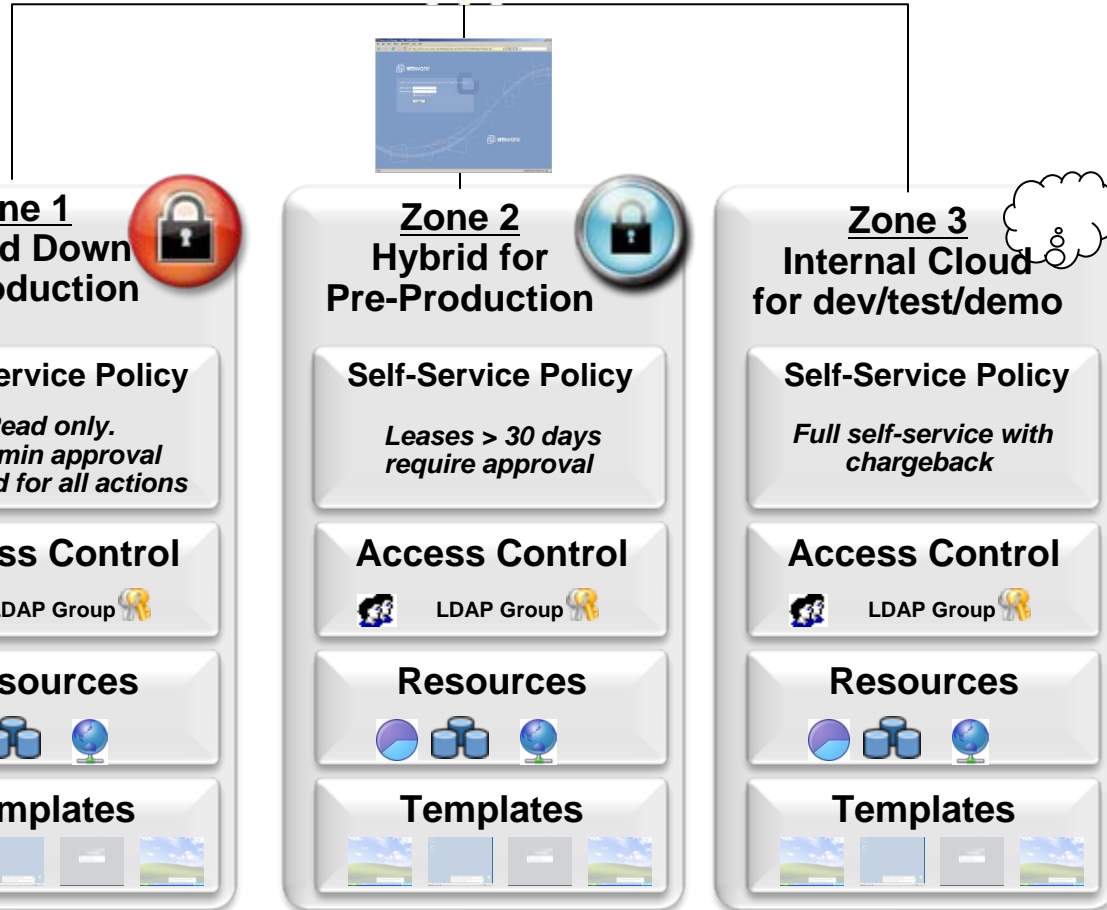
Cloud Operating System

VMware's Vision for Self-Service Access

Self-Service
Portal



VM Users
app owners, test/dev,
trainers, etc.



VI Admin

- Segments infrastructure into zones with people, resources and self-service provisioning policies that match use cases
- Achieves maximum efficiency, predictability and control

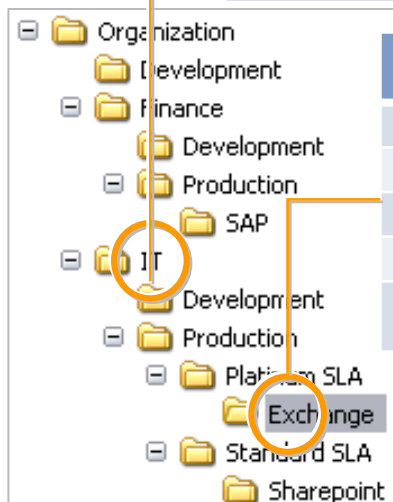
VM Users

- Access to VMs and monitoring data (performance, chargeback) via unified interface
- Self-service provisioning and sandboxing enhances productivity across application lifecycle

vCenter Chargeback

Drive accountability and costing into VM deployments

Fixed Cost per VM
Real Estate = \$20
HA Enabled = \$10
Software = \$200
Power = \$3
Custom Fixed Costs



Metering Element	Multiple Rate
CPU – GHz Used	1.5
Memory – GB Used	1.8
Disk – GB Used	2.0
Disk I/O – GB used	1.4
Network I/O – GB used	0

- Understand costs of VMs
 - Associate VM deployments to appropriate business units
 - Report on usage costs
-
- Targeted at VI Administrators with tight integration to vCenter
 - Flexible costing model with built in APIs
 - Supports costing based on allocation, utilization or a mix of both
 - Add fixed costs & multiple rates at any level, including VM level
 - Automatically propagate costs down the organization structure
 - Build custom organization model or use vCenter (VC) Inventory

End-to-End Integrated Management



Enterprise System Management

vCenter Extensibility
APIs and UI plug-in architecture
to enable 3rd party integration

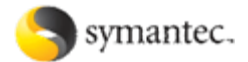
vCenter

**Non-Virtual
Management
Tools**

**Physical-Only
Environments/
Non-x86/Non-VMware**

Non-Virtualized

Rich Ecosystem of VMware Partners



Solutions:

- Remedy ITSM
- Atrium Orchestrator (RBA)

Solutions:

- CA Advanced Systems Management
- CA Data Center Automation

Solutions:

- HP Operations Manager
- HP Server Automation

Solutions:

- IBM Tivoli Monitoring
- IBM Tivoli Usage and Accounting Manager

Solutions:

- Altiris Deployment Solution
- Server Management Suite



Solutions:

- EMC Application Discovery Manager
- IT Compliance Analyzer

Solutions:

- NetIQ AppManager
- NetIQ Aegis

Solutions:

- MP for Systems Center Operations Manager
- SPI for HP Operations

Solutions:

- Quest vFoglight
- Quest vConverter

Solutions:

- Tripwire Enterprise
- Tripwire ConfigCheck

Partnering

← Objectives

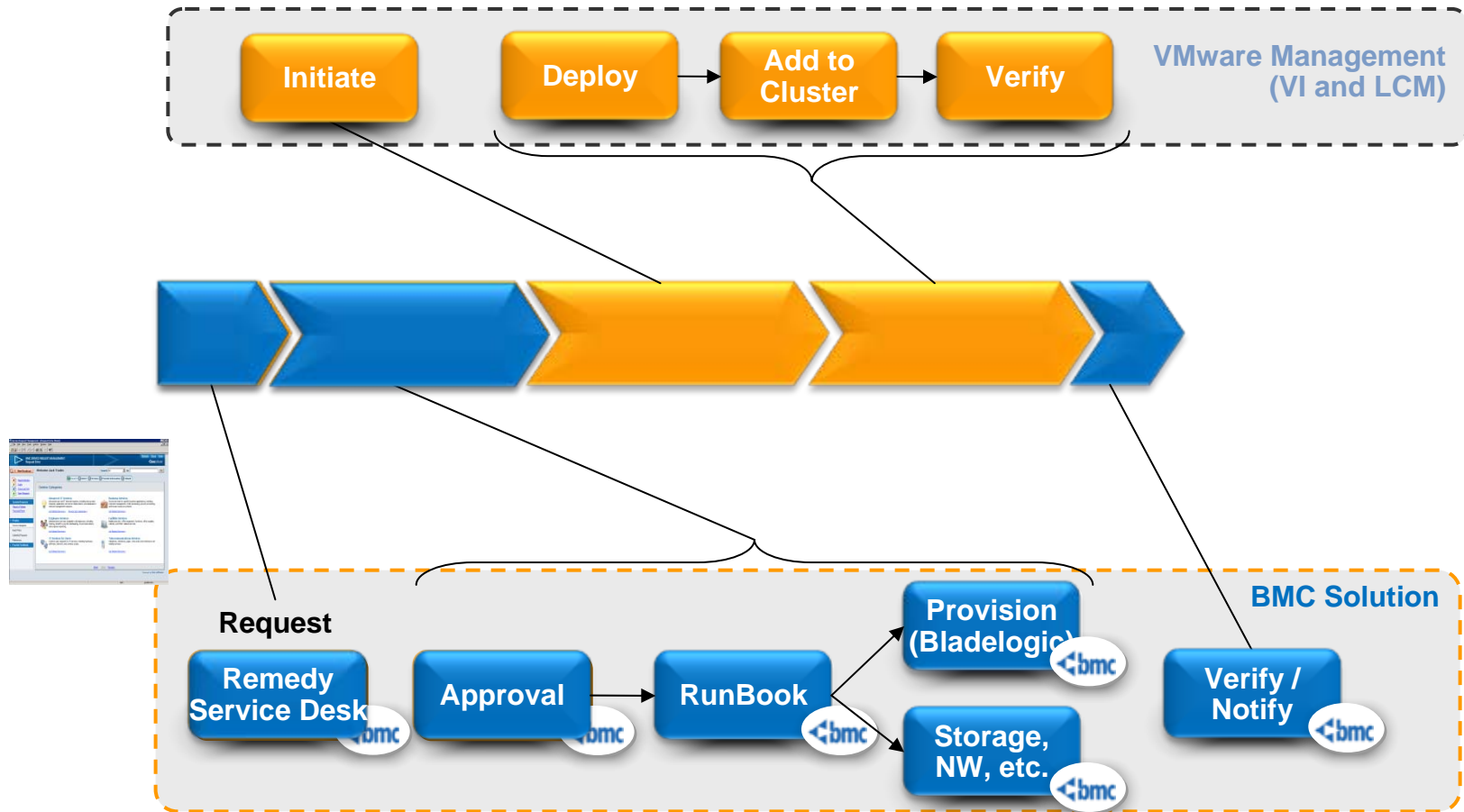
- GTM – leverage management vendors as highly-skilled channel
- Partner Influence– management partners present in customer accounts preference VMware and pull in VI + virtualization management tools
- Competitive Advantage – industry leading management offerings well-integrated and bundled with VMW



← Approach

- VMware Ready Management program
- GTM
 - Channel intersect - Alliance Affiliate (BMC, CA, HP, Symantec)
 - Direct resell/co-sell
- Solutions – BMC, CA, HP

Integrated Automated Provisioning with BMC



Computer Associates OEMs Stage Manager

Automate and manage the application release process from cradle to grave across IT infrastructures and teams

VMware Stage Manager

Service	Stages	Lifecycle Configurations (Deployed/Total)	Archived Configurations	Service Administrators
Accounts Receivable	4	3 / 5	0	Eddie Dinell, Josh Donelson
Demo Service	4	0 / 0	0	Micah Jaffe
ERP	5	1 / 3	0	Jason Campbell, Micah Jaffe
Intranet	2	1 / 1	0	Seth Daniel, Sumet Pannu
Oracle E-Business	4	0 / 0	0	Administrator Account
Order Management	4	4 / 4	5	Eddie Dinell, Josh Donelson
Peoplesoft	4	2 / 3	0	Joe Yandle, Ryk Field
Web	4	0 / 2	0	Administrator Account
Wiki	2	0 / 1	0	Administrator Account

Services (1..9 of 9) Page 1 of 1

CA Data Center Automation Manager

SQL Server SG Utilization

Range: 30m 1h 5h 12h 1d 1 week 2 weeks 1 month

Current Utilization: 45%

Utilization

Time

Filter

Date/Time

Description

Show Events

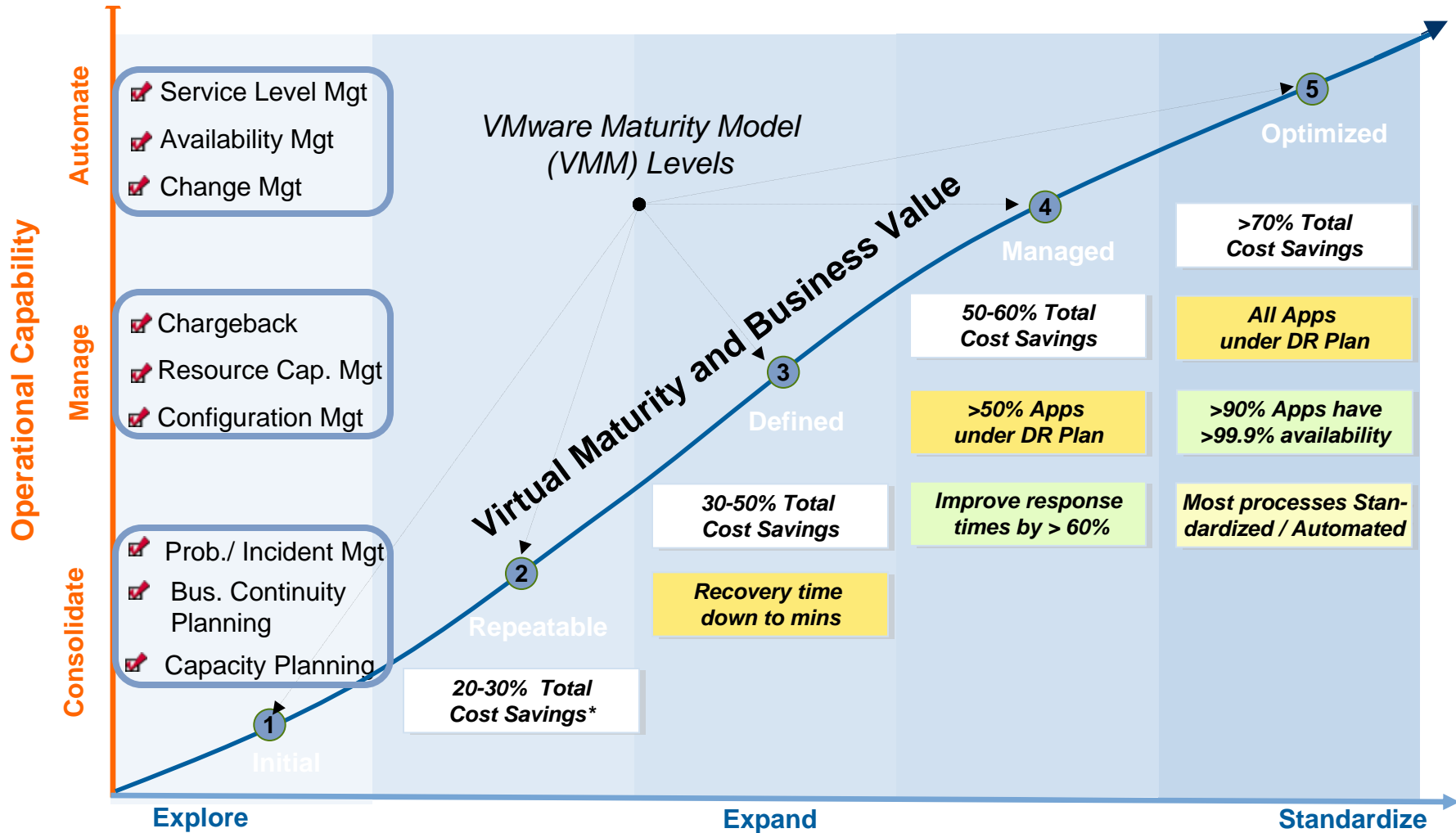
Entity

2007/04/06 03:55:29 AM

CE: usil474b4-vm6 is being monitored

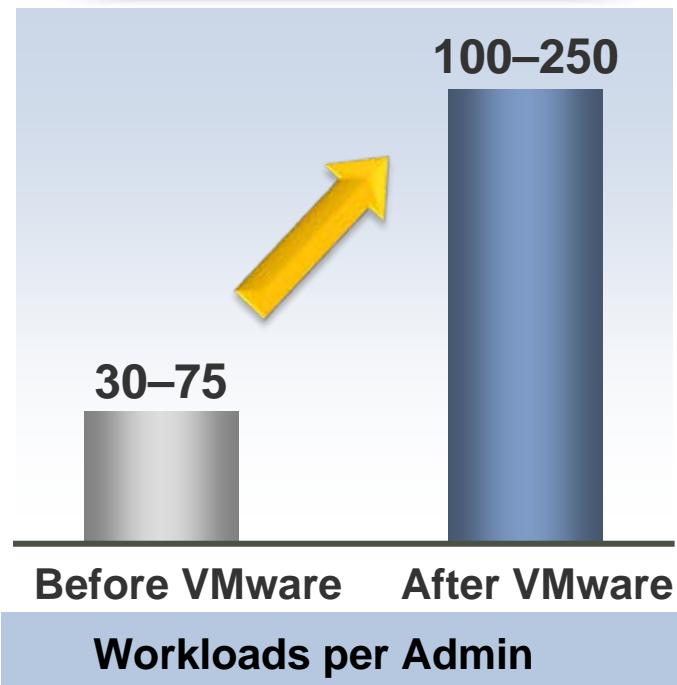
Collection Engine

Operational Transformation



The VMware Effect: Customer Breakthroughs

2–3x Gain in Productivity



Reduce Capital Expenses

- Optimize infrastructure resource utilization through better capacity management
- Enabling chargeback

Reduce Operational Expenses

- Process orchestration for task automation and management of tasks “en masse”
- Improve compliance with IT/business policy

Increased Service Levels

- Enable IT to improve and guarantee application service levels through self-managing capabilities
- Proactively detect, diagnose and remediate problems at various levels – application, configuration, host, and so on

Backup